

This presentation was supported by a grant from the U.S. Department of Homeland Security

AGW TERMinal QUICK SET-UP GUIDE

<http://www.sv2agw.com/ham/default.htm>

Software Developed by George Rossopoylos SV2AGW



PURPOSE

- Quick Setup
- What is AGW TERMinal?
- Set Up
- Connect
- Communications Window
- Beacon Text
- Beacon
- M-Heard
- Ask QRA

Quick Setup

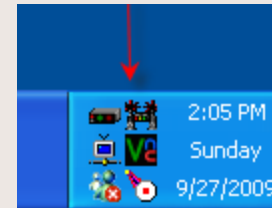
- This presentation is only a “Quick Setup” and operation instruction.
- For a detailed understanding, of AGW read “PEPro Help” from:
 - **<http://C:\Program Files\AGWSoft\Packet Engine Pro\help\index.htm>**.
- For the latest updates and information go to <http://www.sv2agw.com/ham/default.htm>

What is AGW-TERM

- AGW-TERMinal is a packet application from AGW Packet Suite.
- TERM is a keyboard to keyboard program
- It requires the use of Packet commands.
- Contact someone experienced in using Packet Commands or
- Obtain a good reference for basic Packet Communications which can be found on the web **“INTRODUCTION TO PACKET RADIO” by By Larry Kenney, WB9LOZ**
- <http://www.choisser.com/packet/>

Open AGW-TERM

- First open AGWPEPRO and look for the Icon in the lower right of the “Task Bar”
- Then in “Quick Launch” click on the TERM Icon



Set Up

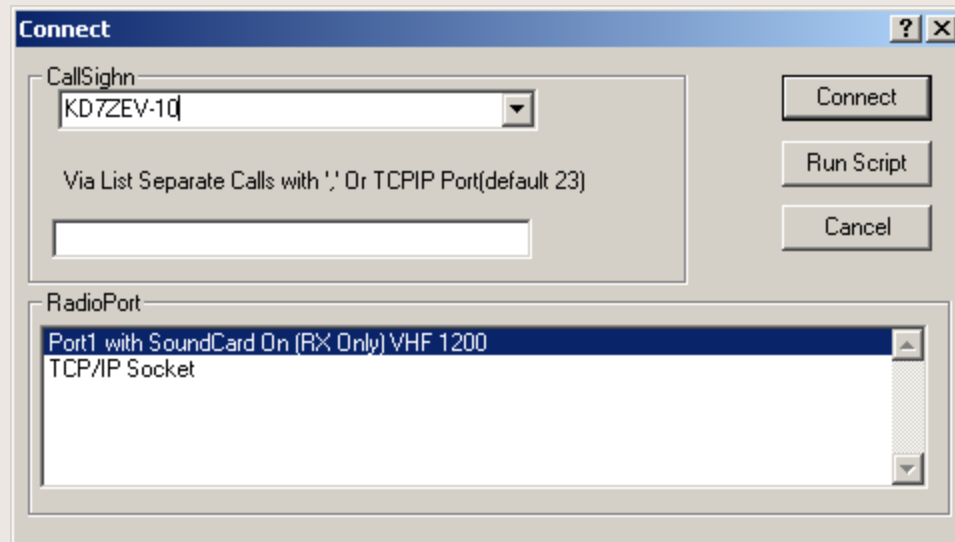


The screenshot shows the "Options" dialog box in the AGWTERMINAL application. The dialog has a blue title bar with the text "AGWTERMINAL" and standard window controls. The "Options" tab is selected, and the "CallSign" sub-tab is active. The dialog contains several input fields and sections:

- MyCall:** A text box containing "WA6MTY-2".
- UnProtoCall:** A text box containing "CQ".
- PacLen:** A text box containing "230". Above this box is the text "If you are Using Nodes Enter 230."
- Frequently Connect Calls:** A section with three columns of call signs: "KD7ZEV", "KQ6FM", and "KE7FYF". Each call sign is in its own text box, and there are empty boxes below each one.

At the bottom of the dialog are three buttons: "OK", "Cancel", and "Apply".

Connect

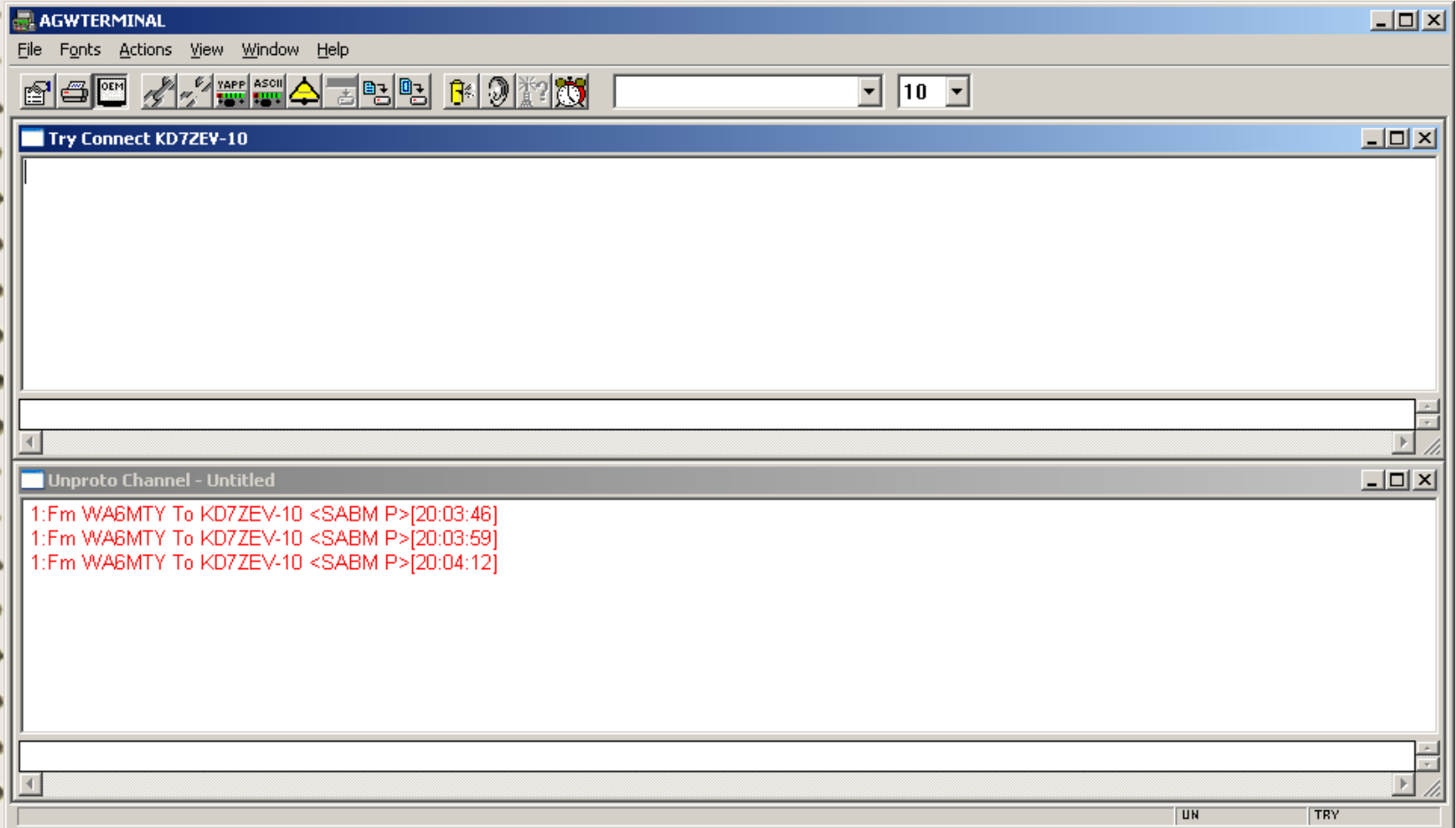


Window

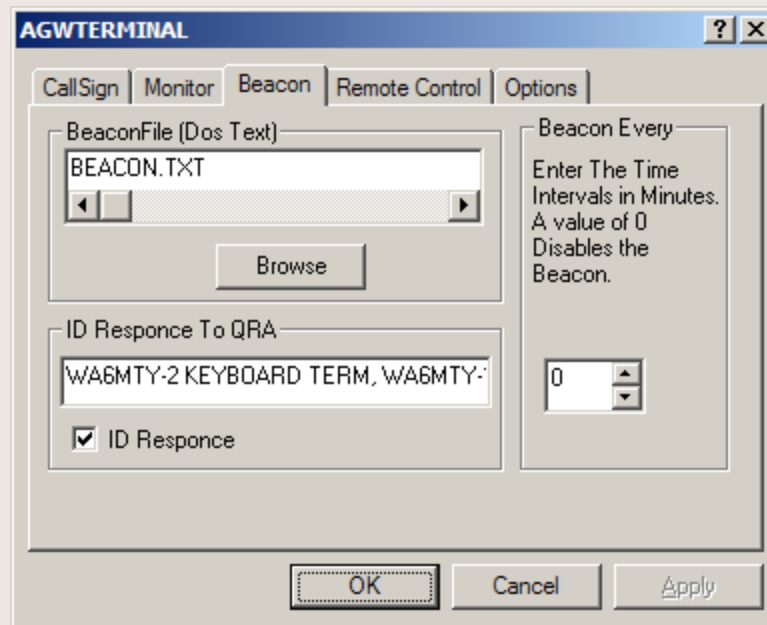


- If you click “Window” you can select “Horizontal” and see both the “Un-proto” (up-protected) channel and the “Connected ” channel(s).
- The un-protected channel can be set up to display all communications readable by your TNC, even those that are not intended for your station.

Horizontal Windows



Beacon Text

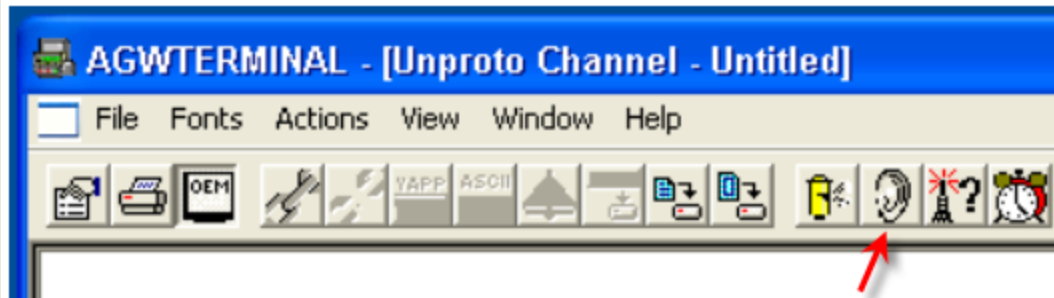


Beacon



- Click the Beacon Icon to transmit the Beacon text message you entered at Setup

M-Heard



- Click the M-Heard icon to show a list of all packet stations heard.

Ask QRA



- Click the QRA icon to send out a request for any stations on frequency to respond with their Station-ID

MORE DETAILS

- For a detailed understanding, of AGW read “PEPro Help” from:
- **<http://C:\Program Files\AGWSoft\Packet Engine Pro\help\index.htm>.**

SUMMARY

- Quick Setup
- What is AGW TERMinal?
- Set Up
- Connect
- Communications Window
- Beacon Text
- Beacon
- M-Heard
- Ask QRA

Questions???



HAMLINK Incident Management System

[http:// WWW.HAMLINKOnline.com](http://WWW.HAMLINKOnline.com)

