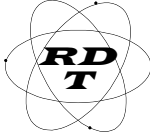


KPC3+ SETUP DRAFT



RD TECHNOLOGY

860 Isis Ct, Reno, NV 89512 775 843-5952, email - bobmiller@gbis.com

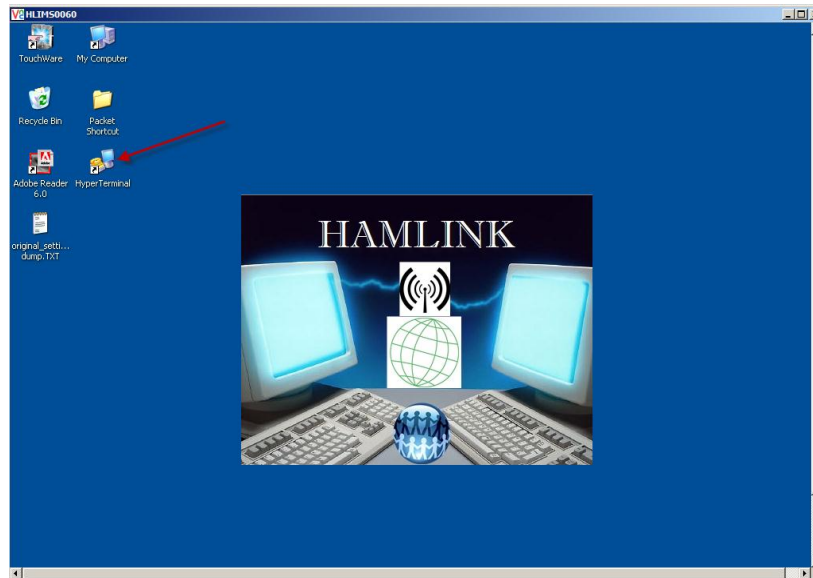
**This procedure describes how to configure the KPC3+ Terminal Node Controller (TNC).
The Hamlink Set-Up procedure tells you how to connect all of the pieces together.**

A. HARDWARE SETUP

1. KANTRONICS KPC3+ Terminal Node Controller (TNC)
2. Serial Cable DB9-DB25 connectors
3. Serial to USB adapter
4. TNC-Radio cable

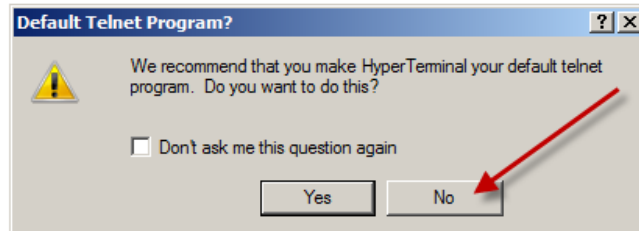
B. INITIALIZE HYPERTERMINAL

1. Make sure the KPC3+ power off.
2. Double click the Hyper Terminal Icon

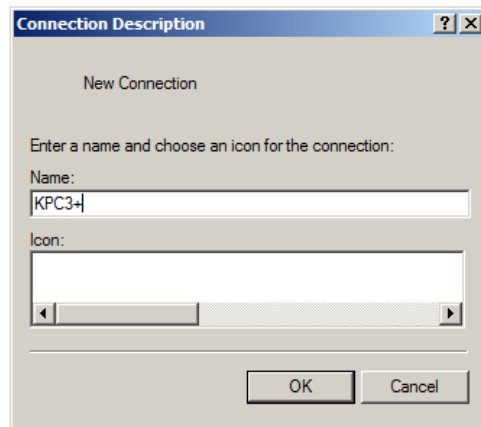


KPC3+ SETUP DRAFT

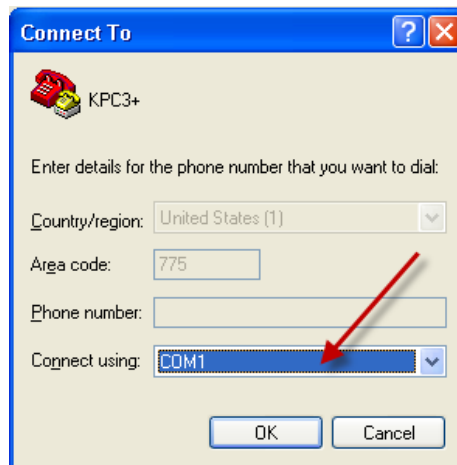
3. The Default Telenet Program will display, click NO.



4. Type in a Name for the New Connection, then click OK.

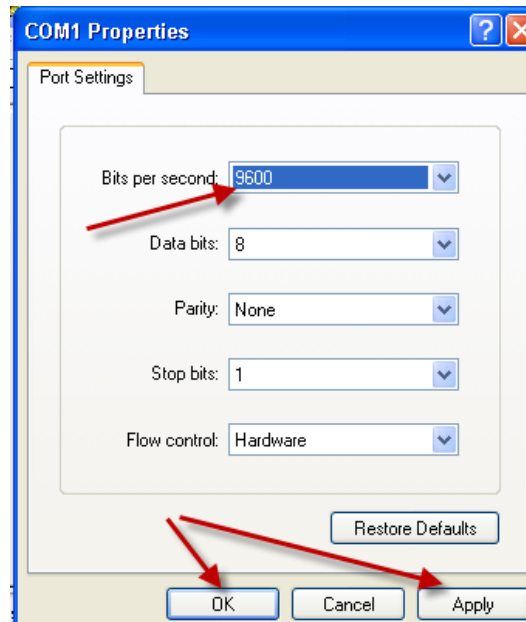


5. Now select "COM1" and click OK.

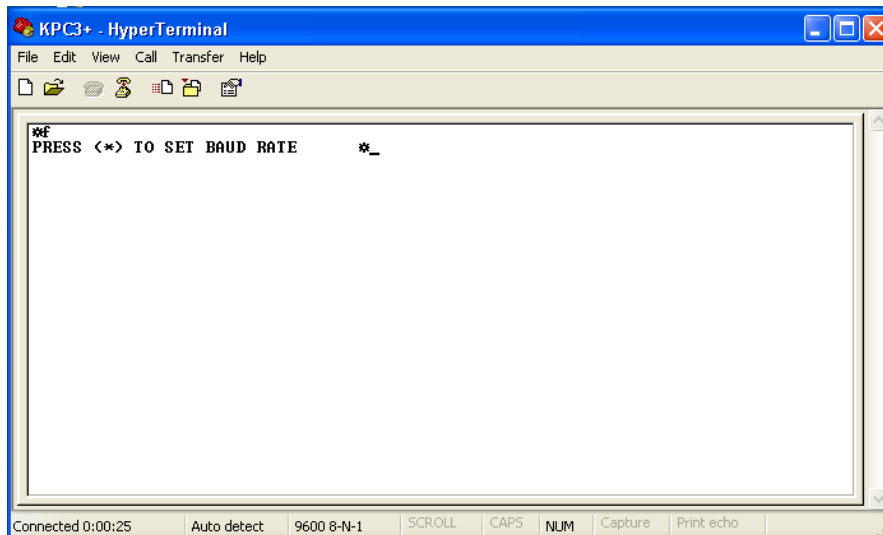


KPC3+ SETUP DRAFT

6. Select "9600", click "Apply" and "OK".



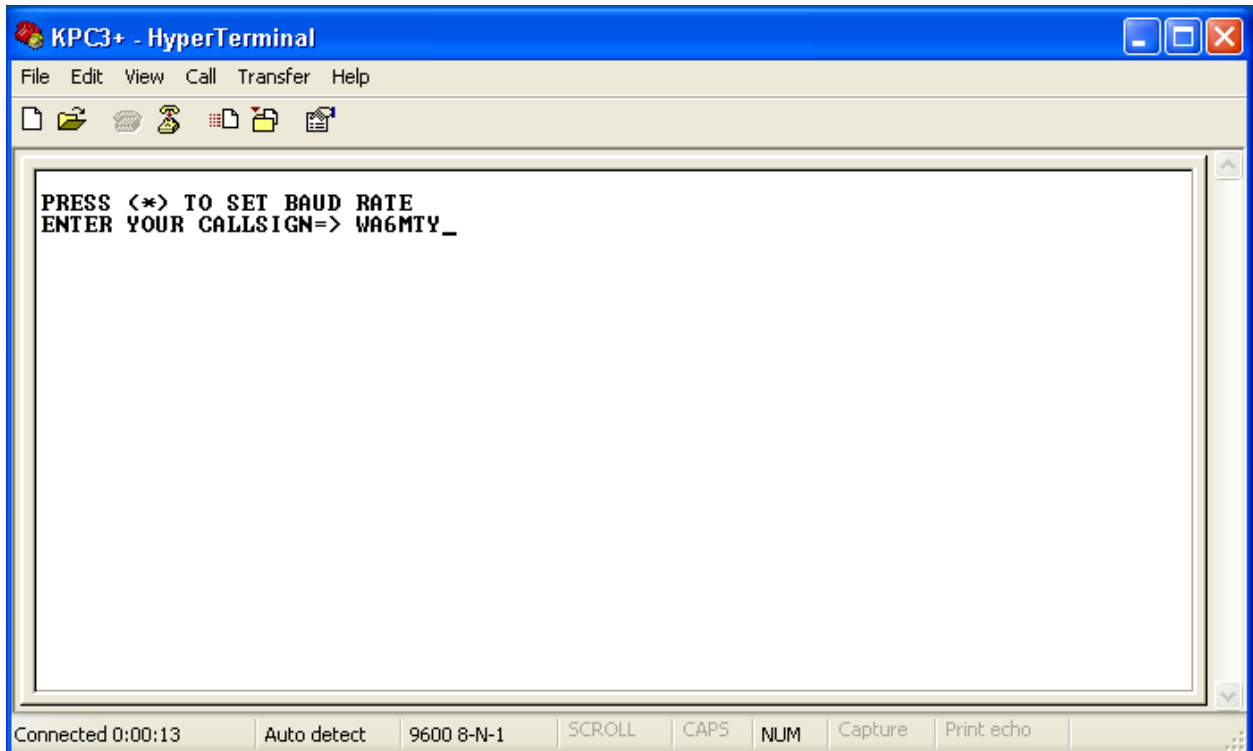
7. Now turn on the TNC and press "Enter", you will get the message to press (*) to set the baud rate.



8. Now enter your Call sign and press ENTER.

NOTE: You don't have to change the call sign in the TNC every time you change operators. Just put in a call sign if you plan to leave the TNC on to us the (BBS mailbox)

KPC3+ SETUP DRAFT



9. The following will display:

KANTRONICS KPC3PMX VERSION 9.1

(C) COPYRIGHT 2002-2005 BY KANTRONICS INC. ALL RIGHTS RESERVED.

DUPLICATION PROHIBITED WITHOUT PERMISSION OF KANTRONICS.

NOTE: The data that shows in HyperTerminal is just text so instead of showing screen shots I will show text for the rest of this procedure. When the Command Prompt comes up (cmd:) type the command without a space after cmd:.

10. After cmd: type MYCALL and the call you entered will display.

cmd:MYCALL

MYCALL WA6MTY

NOTE: In the examples show the command prompt will come up and you type the command after the cmd: prompt.

11. Type DISP which will display the status of all the commands in the TNC.

cmd:DISP

BKONDEL ON

Page 4 of 5

KPC3+ SETUP DRAFT

A Link state is: DISCONNECTED

DAYTIME 01/01/2003 00:01:34

DELETE \$08 (CTRL-H)

DWAIT 0

ECHO ON

INTERFACE NEWUSER

LGETCHAR \$05 (CTRL-E)

MONITOR ON

MYCALL WA6MTY

MYPBBS WA6MTY-1

PBBS 100

TXDELAY 30 (300 msec)

UNPROTO CQ

12. Now type DAYTIME and "DAYTIME 01/01/2003 00:01:34" will display.
13. To verify the correct format for DAYTIME, type Help after cmd: and a space and "DAYTIME" (as follows): cmd:HELP DAYTIME
14. DAYTIME yymmddhhmm[ss] is displayed to show you the correct format.
15. Now after cmd: type DAYTIME 110906022021 as follows: cmd:DAYTIME 1109062021
16. Now type DAYTIME again and the date and time you entered should show, as follows:
DAYTIME 09/06/2011 20:21:03
17. Now type CTEXT, the response will come back blank. CTEXT is the text you want displayed on the message returned to the sender. EXAMPLE: "Connected to KR7EOC-2 Washoe County Regional EOC"
18. Type MYALIAS and enter an abbreviation for your packet station, ours is WCEOC.
19. Type MYNODE, it should be whatever was entered in MYCALL with a -7 after it.
EXAMPLE: KR7EOC-7

That concludes the initial setup of the KANTRONICS KPC3+ TNC.