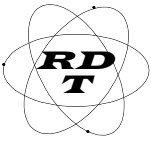


# REMOTE CONTROL OF THE HAMLINK COMPUTER



## RD TECHNOLOGY

860 Isis Ct, Reno, NV 89512 775 843-5952, email - bobmiller@gbis.com

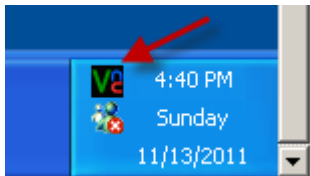
## ACCESSING SERVER DESKTOP REMOTELY

This procedure describes how to access and control the Hamlink computer remotely.

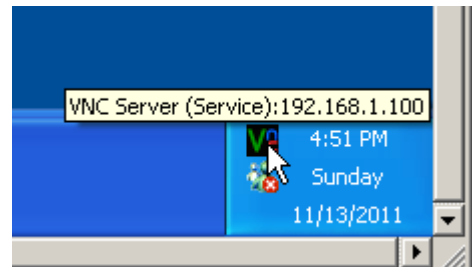
1. With your guest computer connected to the internet via your browser and navigate to <http://www.realvnc.com>.
2. From this site download a copy of the “VNC® Viewer Free Edition 4.1 for Windows” in order to obtain a copy of the software required for remote accessing of the HAMLINK system.
3. Install the VNC viewer on your guest PC and set up the application so that you can quickly access it from your desktop with the use of a shortcut:



4. Now; On the HAMLINK Server that you wish to connect to, hover the cursor over the VNC Server Icon in the lower right corner of the HAMLINK SERVER’s task bar to view the IP address. Write down the IP address (in this case it is 192.168.1.100)



*Hover over the ICON to read :*

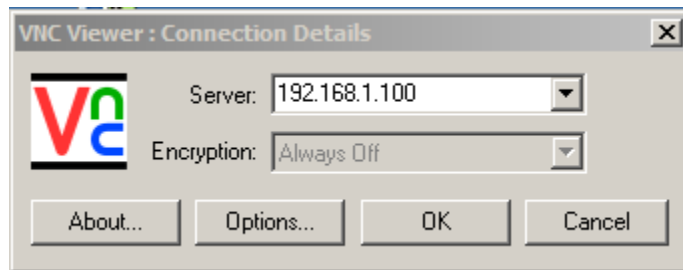


5. Return to your Guest PC and Double Click the VNC viewer Icon.



6. Enter the IP address of the HAMLINK Server that you wrote down in Step #4.

# REMOTE CONTROL OF THE HAMLINK COMPUTER

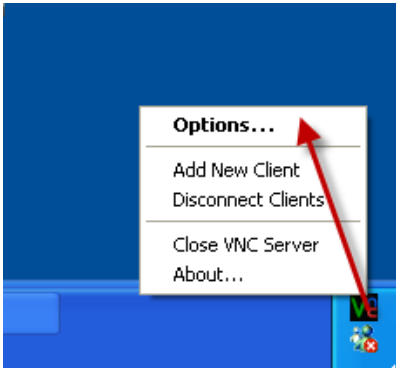


7. Click OK and enter the default password "crisis".
8. You should see the desktop of the HAMLINK Server computer on your laptop screen and have full control of the computer remotely from your Guest PC.

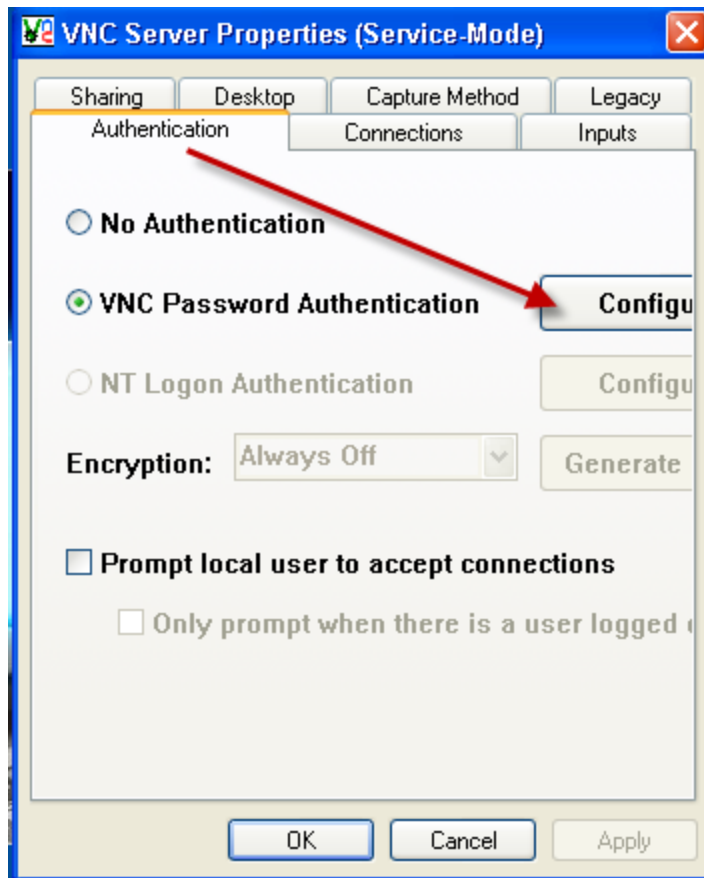


# REMOTE CONTROL OF THE HAMLINK COMPUTER

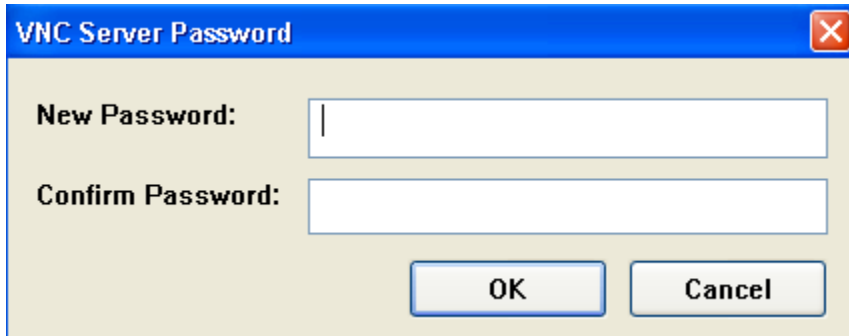
9. To change the HAMLINK System's VNC Password; right click on the Server's VNC icon and select the "options.." menu



10. Navigate to the Authentication Tab and select the Configure button.



# REMOTE CONTROL OF THE HAMLINK COMPUTER



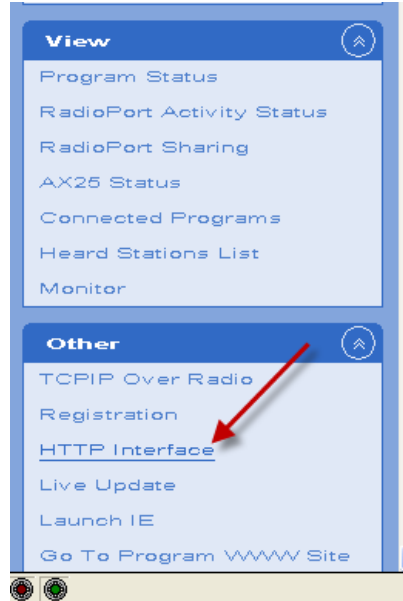
The image shows a Windows-style dialog box titled "VNC Server Password". It has a blue title bar with a red close button in the top right corner. The dialog box contains two text input fields: "New Password:" and "Confirm Password:". Below the input fields are two buttons: "OK" and "Cancel".

Additional Feature Documentation is available at : <http://www.realvnc.com/support/documentation.html>

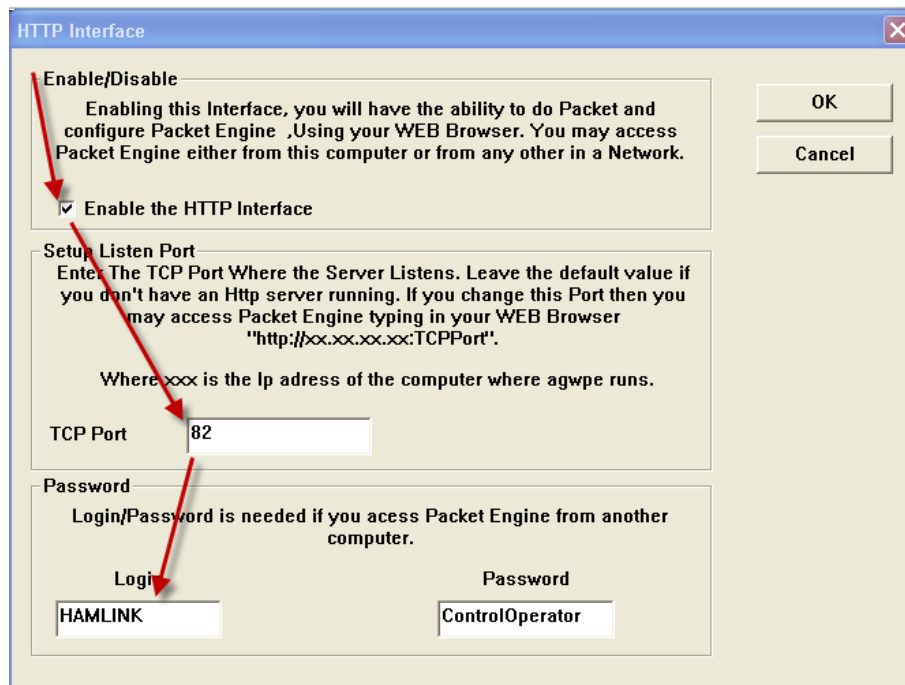
# REMOTE CONTROL OF THE HAMLINK COMPUTER

## ACCESSING THE HAMLINK SERVER'S PACKET RADIO ENGINE INTERFACE

- 1.) Open Packet Engine Pro on HAMLINK Server and select "OTHER-HTTP Interface".

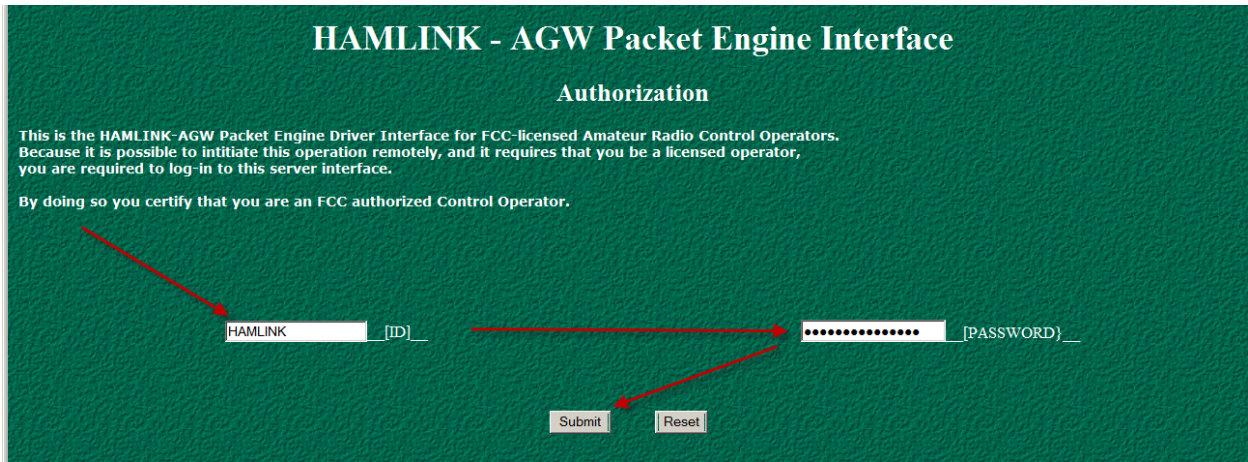


- 2.) Enable the HTTP Interface and select a port (ie. 82) that is not used by any other Server application.



# REMOTE CONTROL OF THE HAMLINK COMPUTER

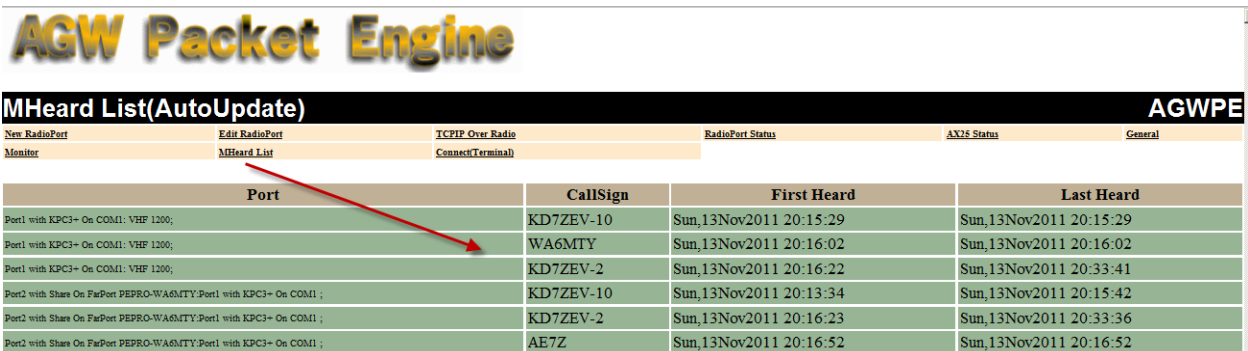
- 3.) Press OK to exit and then minimize the Packet Engine Pro Application.
- 4.) From a remote Guest PC, Open a Web Browser and enter the IP address of the Server PC followed by the Port number defined for remote PE Pro access (ie. **192.168.1.103:82**)



- 5.) Once authenticated, you have Network access to monitoring and controlling the Remote Radio Server's PE Pro Engine.




- 6.) You can then navigate to any of the menus for additional data or control of the Packet Engine.



# REMOTE CONTROL OF THE HAMLINK COMPUTER

7.) You can also add or control radio ports remotely



**AGW Packet**

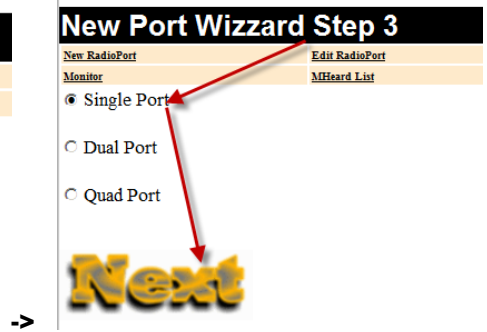
**New Port Wizzard**

New RadioPort [Edit RadioPort](#)  
 Monitor [MHeard List](#)  
 PACCOM  
**Next**



**New Port Wizzard Step 2**

New RadioPort [Edit RadioPort](#)  
 Monitor [MHeard List](#)  
 Serial Port: Com4  
 BaudRate: 300b  
**Next**



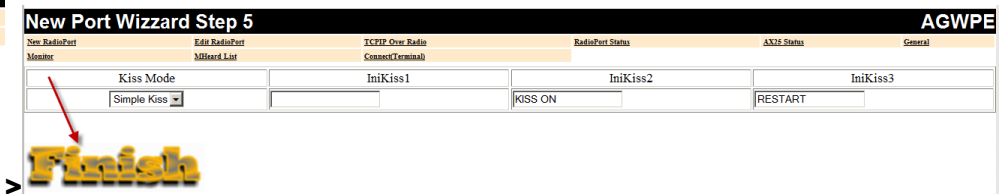
**New Port Wizzard Step 3**

New RadioPort [Edit RadioPort](#)  
 Monitor [MHeard List](#)  
 Single Port  
 Dual Port  
 Quad Port  
**Next**



**New Port Wizzard Step 4**

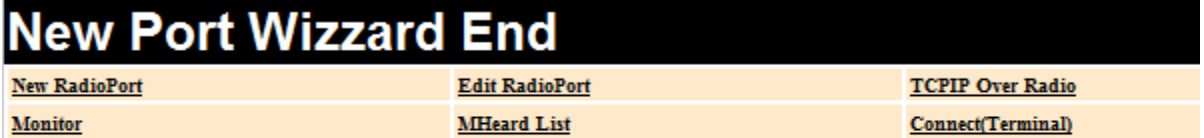
New RadioPort [Edit RadioPort](#)  
 Monitor [MHeard List](#)  
 1st RadioPort Friendly Name: HFWINLINK RADIO  
**Next**



**New Port Wizzard Step 5** AGWPE

New RadioPort	Edit RadioPort	TCP/IP Over Radio	RadioPort Status	AX25 Status	General
Monitor	MHeard List	Connect(Terminal)			
Kiss Mode	IniKiss1	IniKiss2	IniKiss3		
Simple Kiss		KISS ON	RESTART		

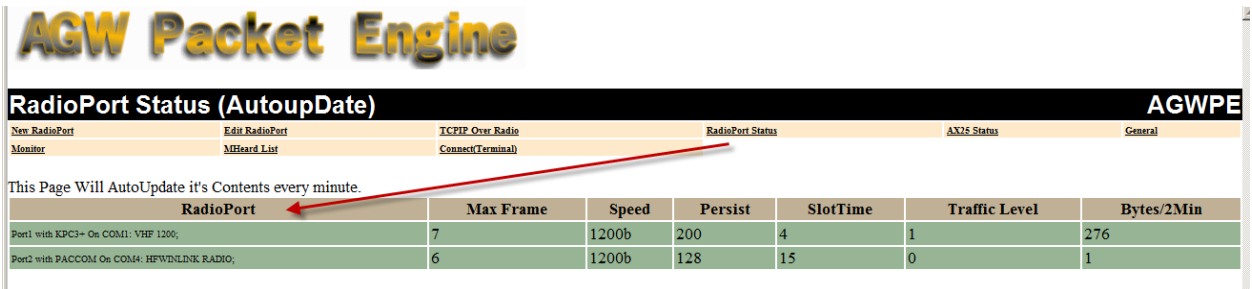
**Finish**



**New Port Wizzard End**

[New RadioPort](#) [Edit RadioPort](#) [TCP/IP Over Radio](#)  
[Monitor](#) [MHeard List](#) [Connect\(Terminal\)](#)

A New RadioPort(s) Has Been Created. Restart Program for Changes to Take Effect!



**AGW Packet Engine**

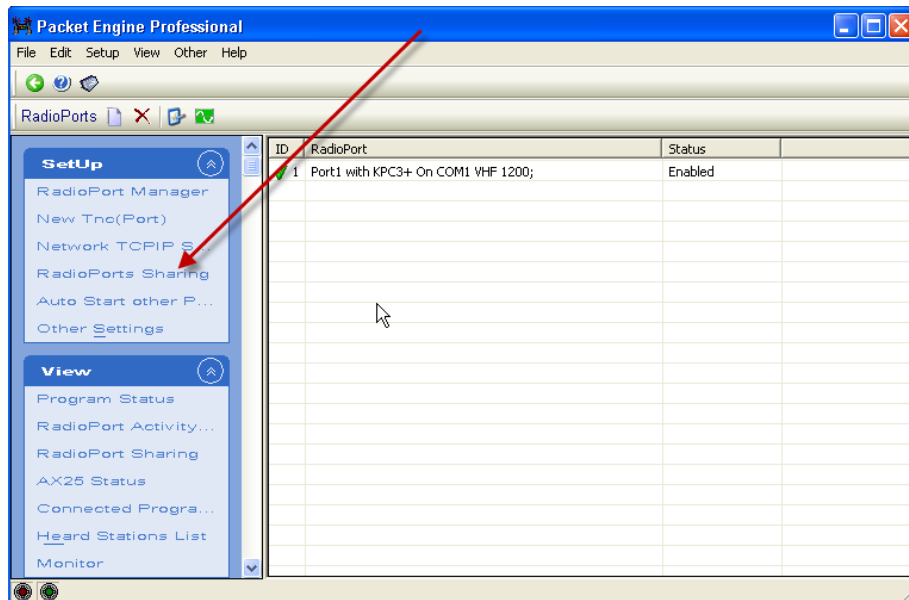
**RadioPort Status (AutoupDate)** AGWPE

New RadioPort	Edit RadioPort	TCP/IP Over Radio	RadioPort Status	AX25 Status	General	
Monitor	MHeard List	Connect(Terminal)				
This Page Will AutoUpdate it's Contents every minute.						
RadioPort	Max Frame	Speed	Persist	SlotTime	Traffic Level	Bytes/2Min
Port1 with KPC3+ On COM1: VHF 1200,	7	1200b	200	4	1	276
Port2 with PACCOM On COM4: HFWINLINK RADIO,	6	1200b	128	15	0	1

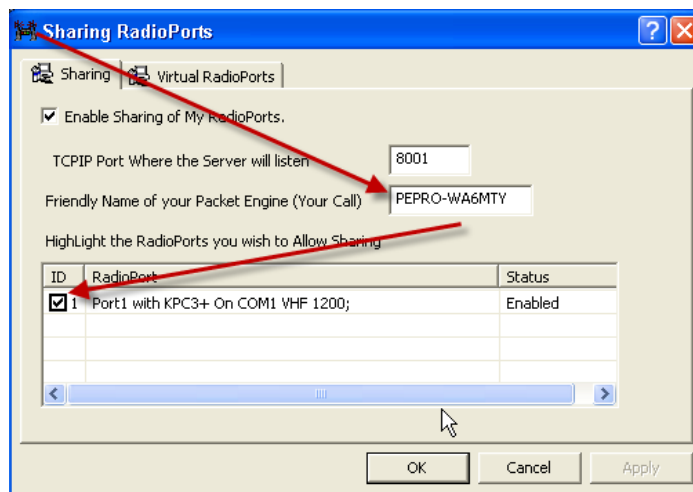
# REMOTE CONTROL OF THE HAMLINK COMPUTER

## ACCESSING THE HAMLINK SERVER'S PACKET RADIO RESOURCES

- 1.) Open Packet Engine Pro on HAMLINK Server and select "Radio Port Sharing".

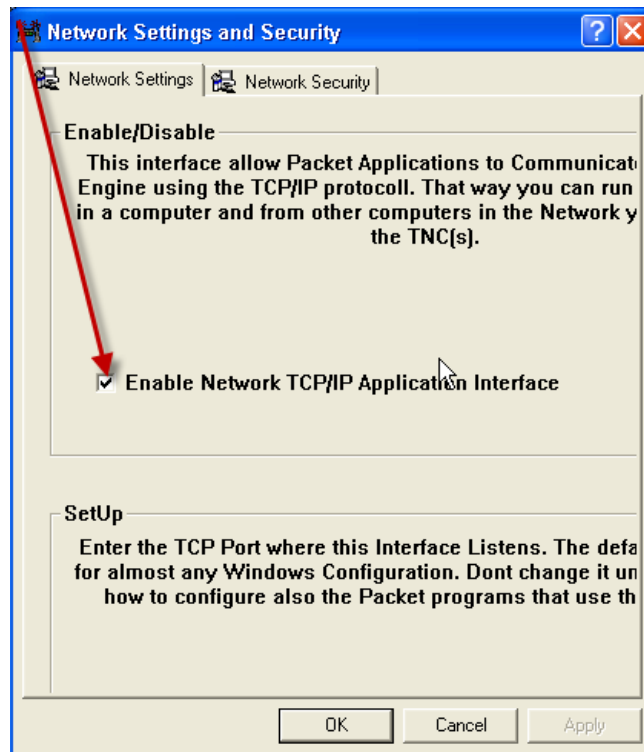
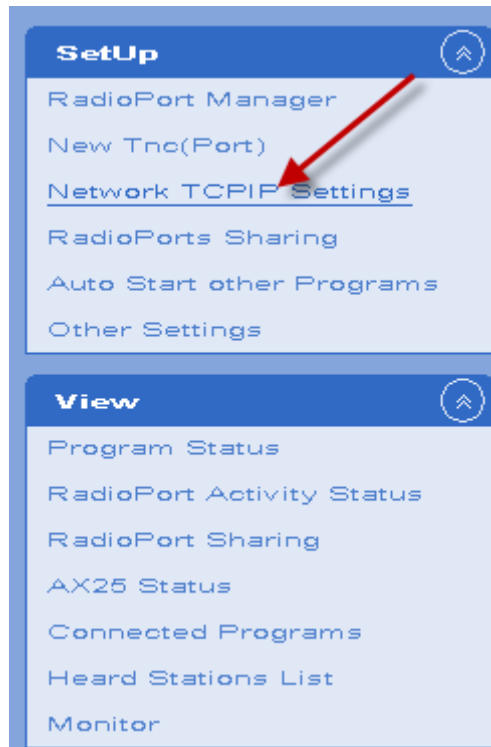


- 2.) Within the Sharing Radio ports menu, Create a "friendly name" for your HOST packet-engine and select the radio ports you wish to share.



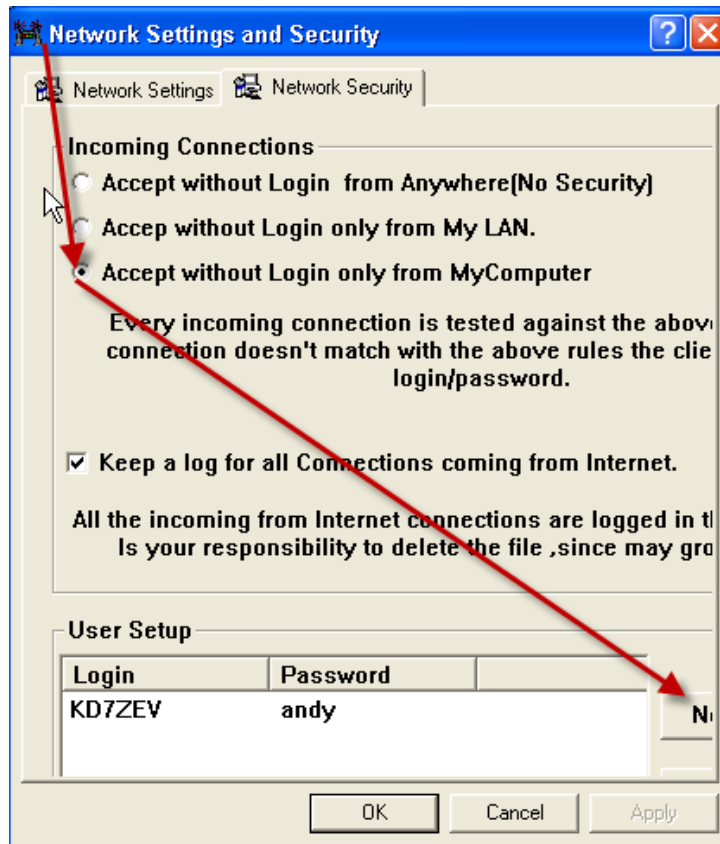
# REMOTE CONTROL OF THE HAMLINK COMPUTER

3.) Press OK and enable Network TCP/IP Settings.

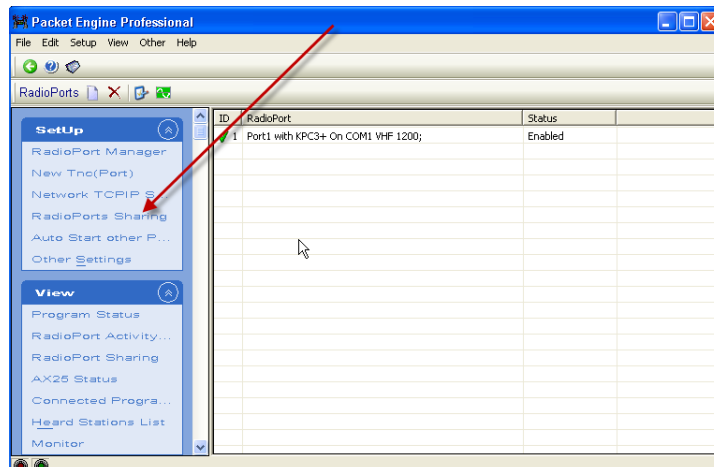


# REMOTE CONTROL OF THE HAMLINK COMPUTER

- 4.) Alternately select the security tab for defining who has access to these radio ports. You can even add users and establish password requirements for use of these resources.

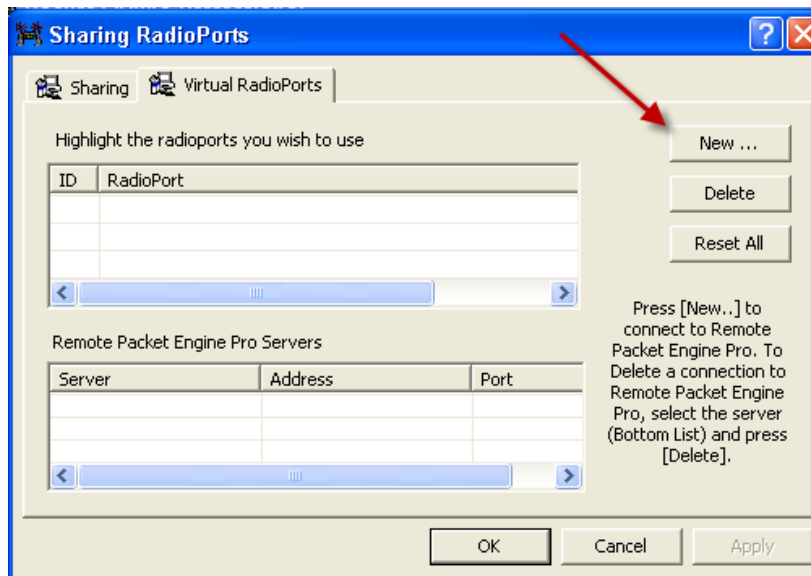
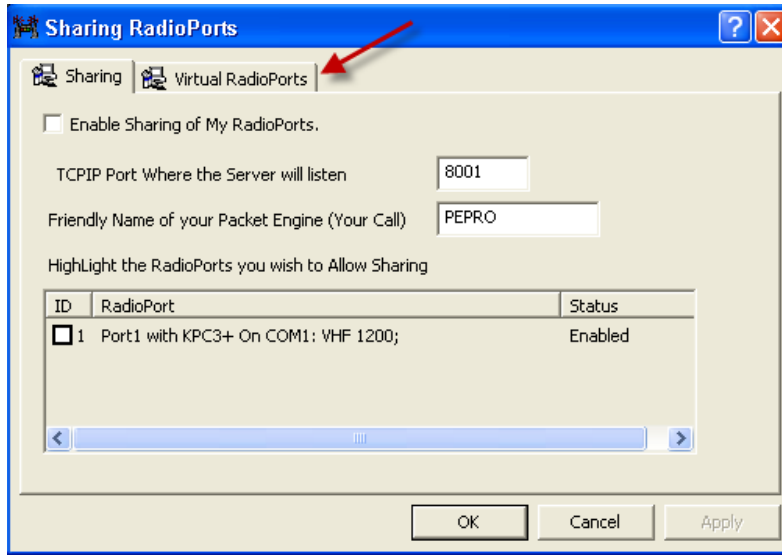


- 5.) On the Guest system Open Packet Engine Pro and select "Radio Port Sharing".

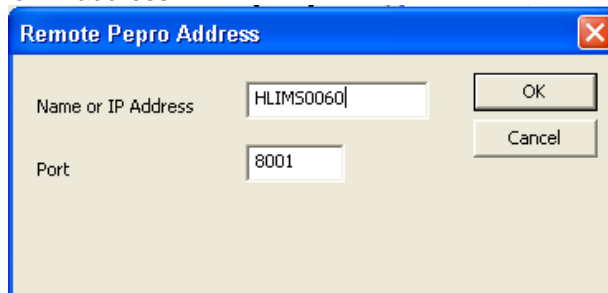


# REMOTE CONTROL OF THE HAMLINK COMPUTER

- 6.) For this Guest system, this time select the "Virtual Radio Port" tab and select the NEW button to link to the shared radio resource that you wish to connect to.

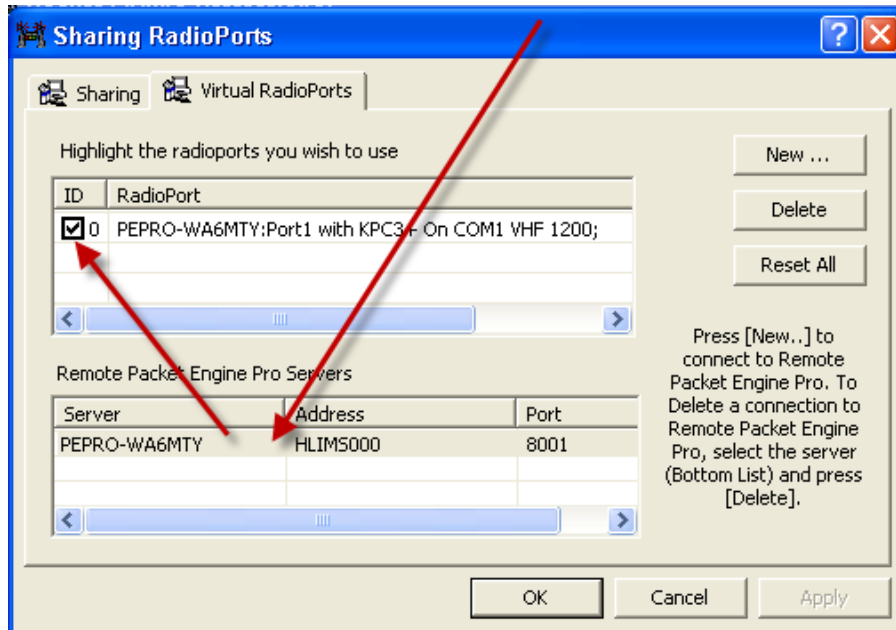


- 7.) Enter the Server PC name or IP address.

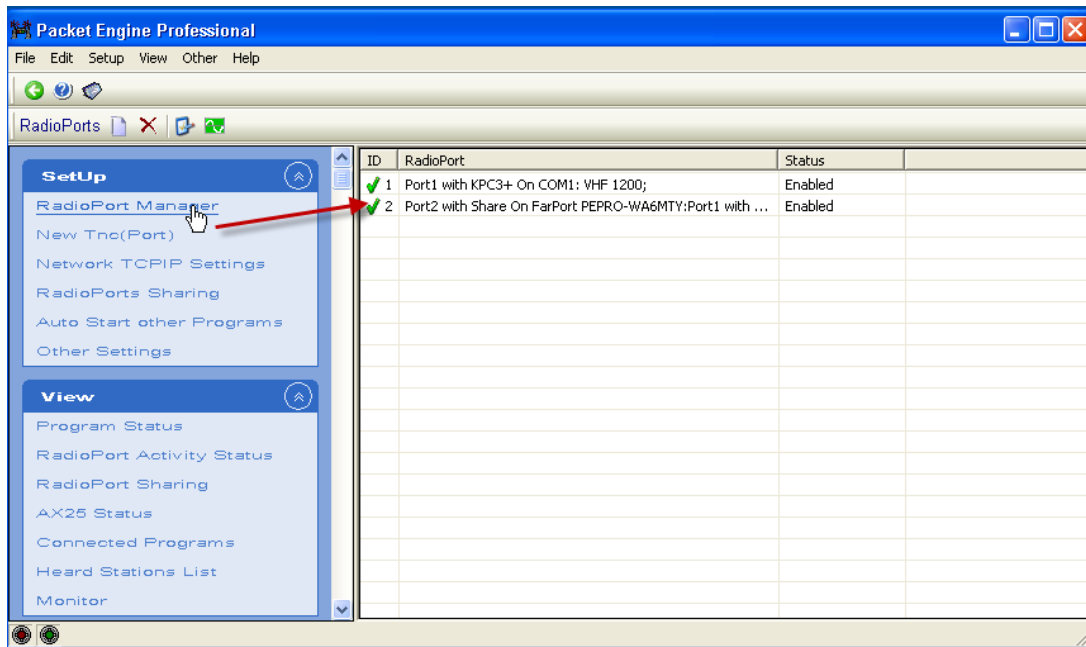


# REMOTE CONTROL OF THE HAMLINK COMPUTER

- 8.) Once the Remote Packet Engine Pro Servers have been located, Select the server and Highlight the radios that you wish to use.

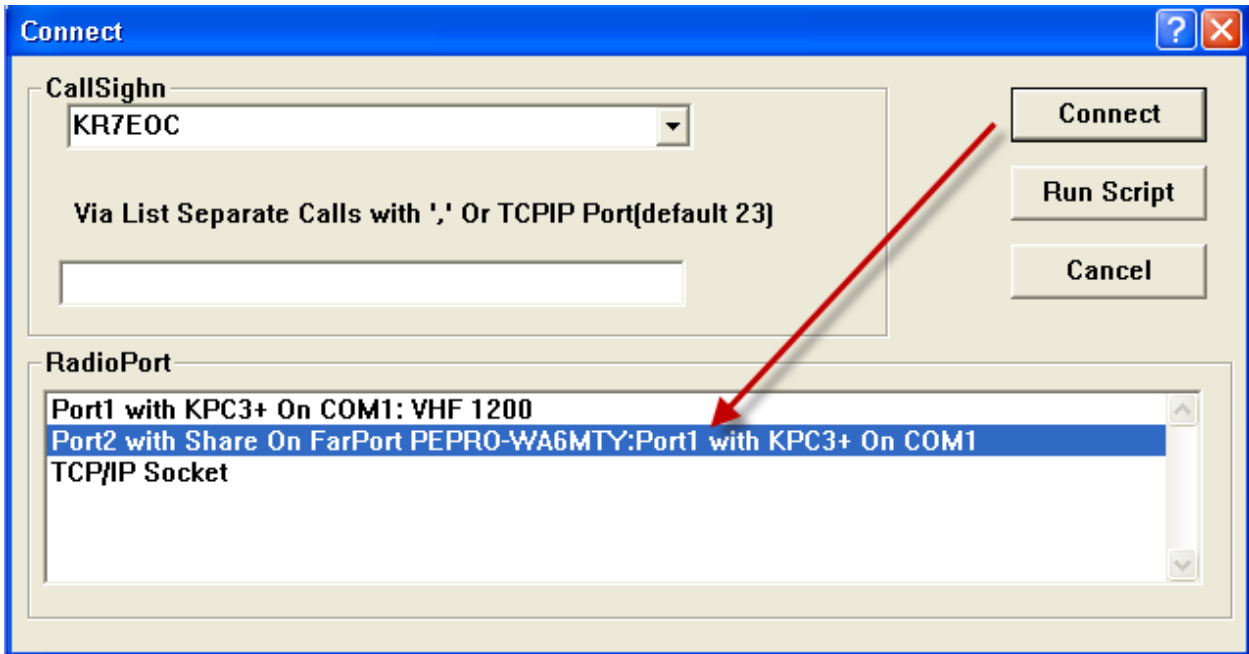


- 9.) Click Ok to complete entry. Shutdown and restart you Guest PC's Packet Engine Pro Engine to verify that the Share Radio Resource is not available.



# REMOTE CONTROL OF THE HAMLINK COMPUTER

10) You can now open any PA Pro enabled Application and select Shared Radio resources as you virtual TNC(s).



(OR)

