



This presentation was supported by a grant from the U.S. Department of Homeland Security

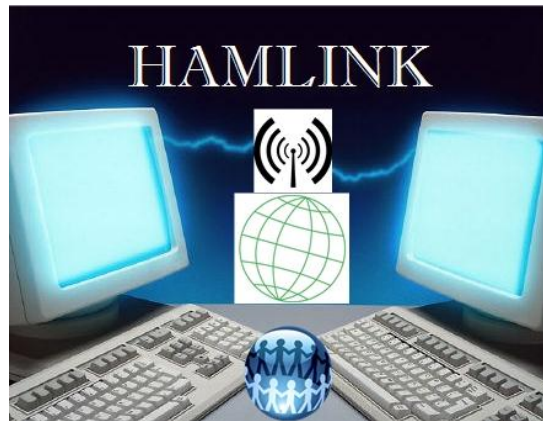
HAMLINK's - Intranet Information Server An overview of features and functionality

Presented by Andre' Munoz - KD7ZEV Technical Assistant Emergency Coordinator WCARES

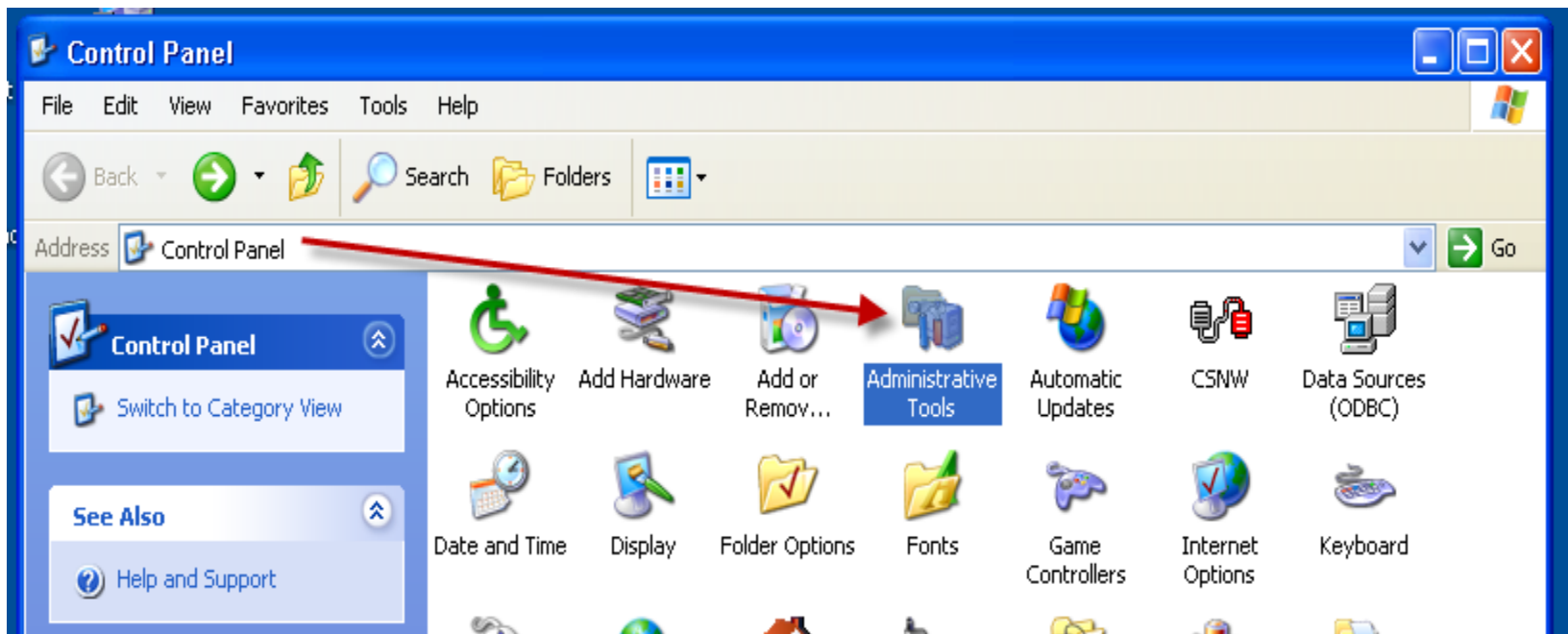
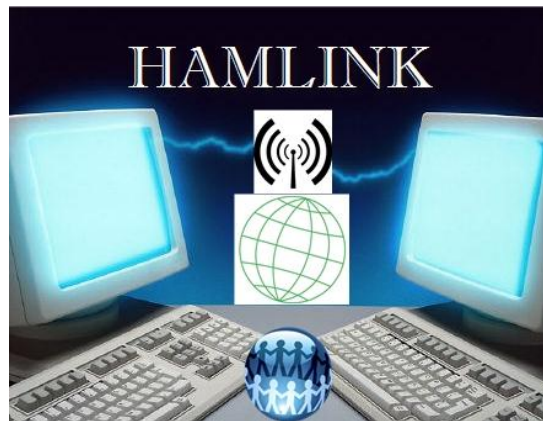


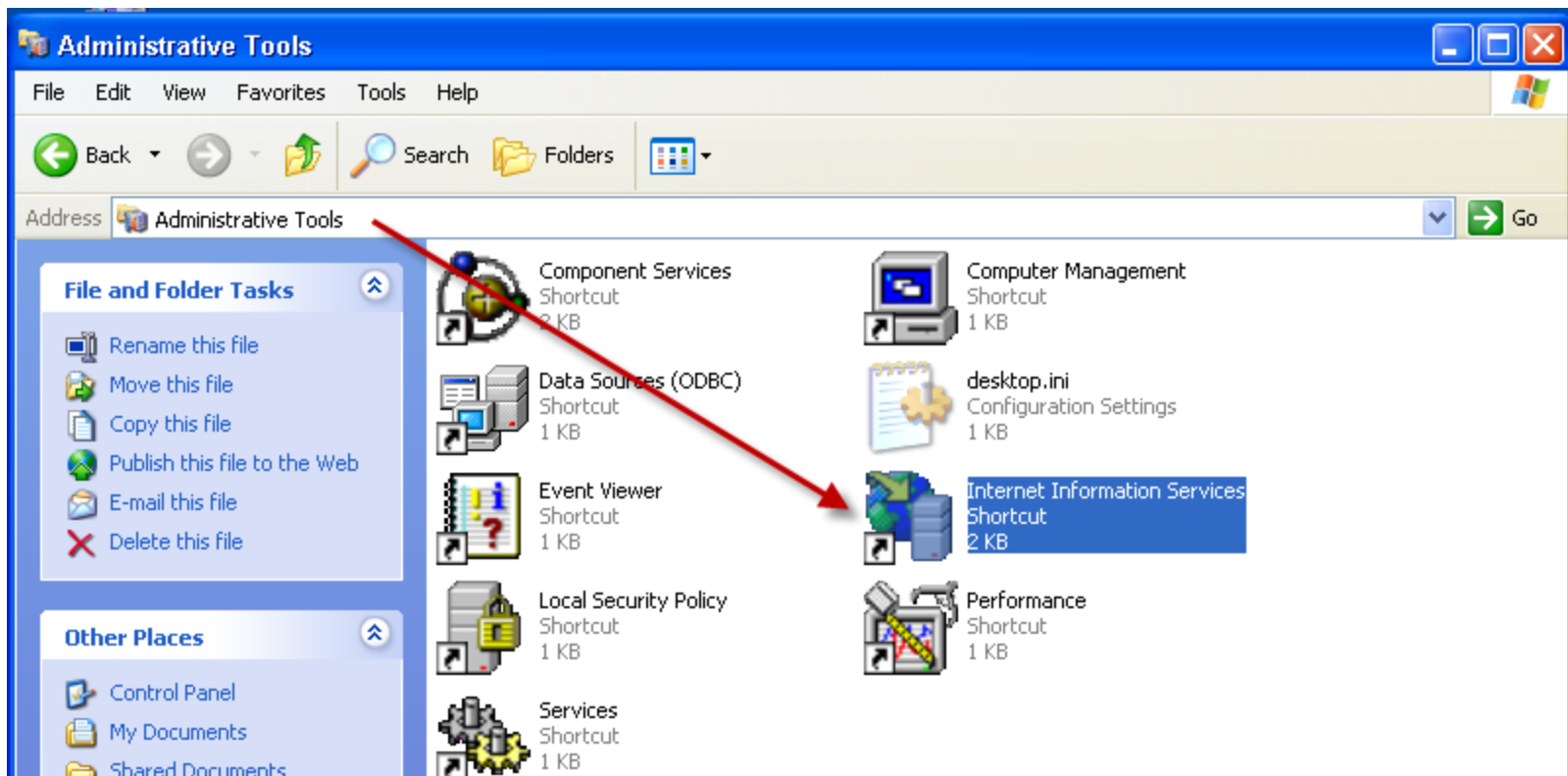
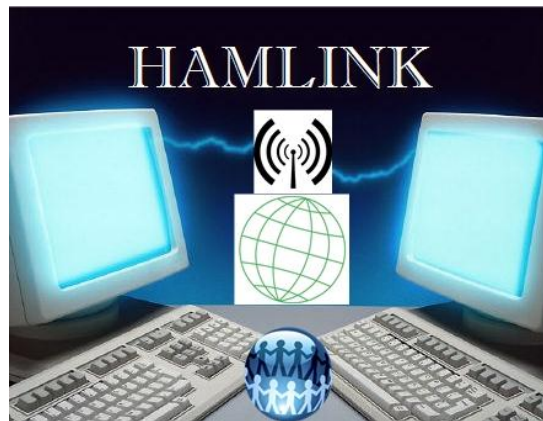


- IIS stands for Internet Information Services.
- It is intended for Intranet use on a HAMLINK system
- It is a web server which provides access to web pages published on it.
- It does a similar role to Apache, except it is more user friendly.
- Getting it set up for the first time is actually easier than most people think.



- To control the full functionality of IIS:
 - go to the Control Panel and then navigate to "Administrative Tools".
- You will find the "Internet Information Services"
 - open the short cut to manage the IIS related services.







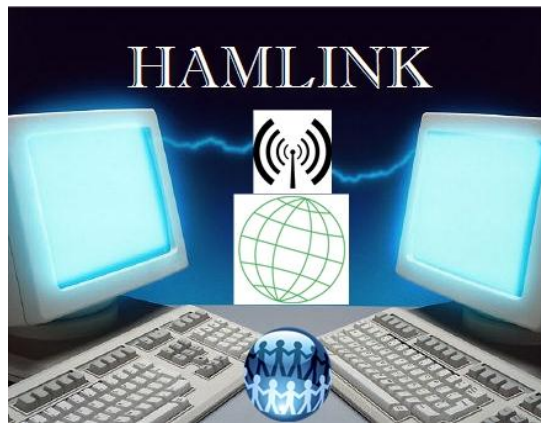
Internet Information Services

File Action View Help

Internet Information Services

- HLIMS0042 (local computer)
 - Web Sites
 - HAMLINK Web81 Site
 - IISHelp
 - MSMQ
 - Scripts
 - Printers
 - IMAGES
 - aspnet_client
 - system_web
 - 2_0_50727
 - Data
 - FTP_INBOX
 - FTP_OUTBOX
 - FTP Sites
 - HAMLINK FTP Site
 - HAMLINK SMTP27 Virtual Server
 - Domains
 - Current Sessions

Name	Path	Status
common		
iis		
default.htm		



Internet Information Services

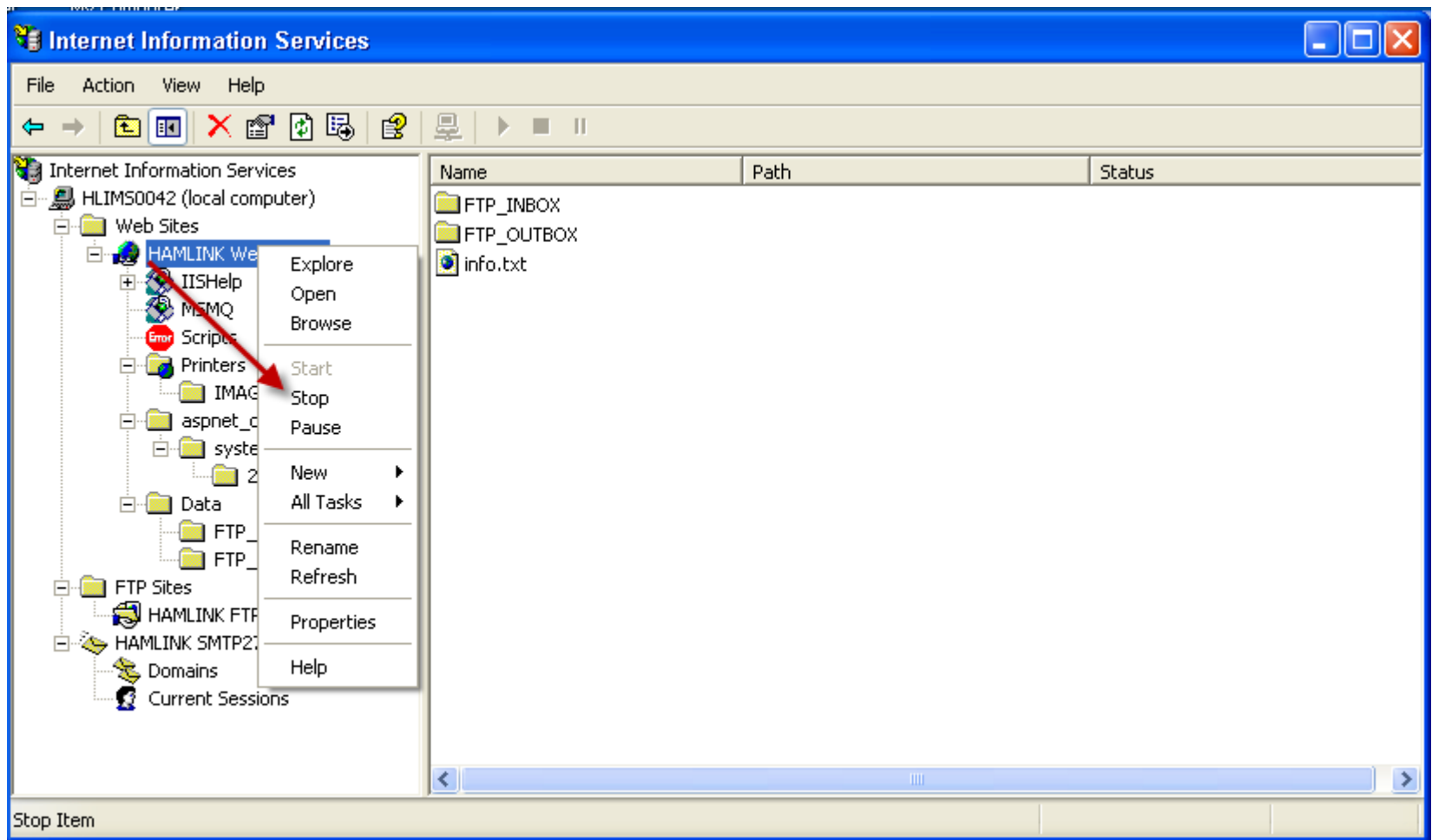
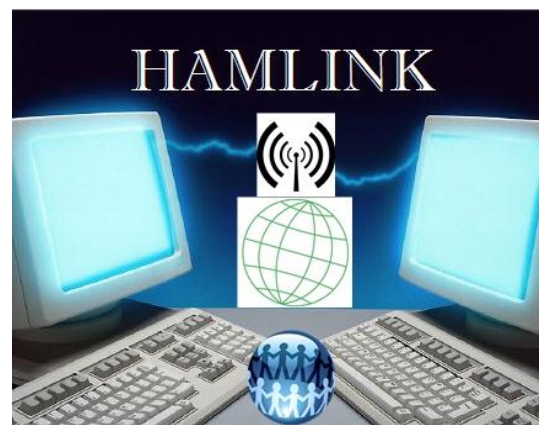
File Action View Help

Internet Information Services

- HLIMS0042 (local computer)
 - Web Sites
 - HAMLINK Web81 Site
 - IISHelp
 - MSMQ
 - Scripts
 - Printers
 - IMAGES
 - aspnet_client
 - system_web
 - 2_0_50727
 - Data
 - FTP_INBOX
 - FTP_OUTBOX
 - FTP Sites
 - HAMLINK FTP Site
 - HAMLINK SMTP27 Virtual Server
 - Domains
 - Current Sessions

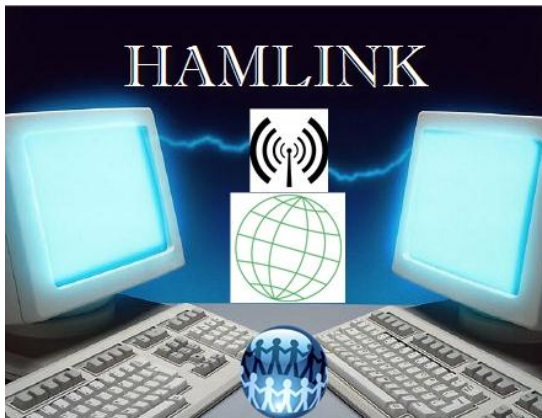
Name	Path	Status
FTP_INBOX		
FTP_OUTBOX		
info.txt		

- Stopping the IIS Server



Stopped IIS Server

End-User Experience




Cannot find server - Microsoft Internet Explorer

File Edit View Favorites Tools Help


Back Forward Stop Refresh Home Search Favorites

Address <http://localhost:81/>

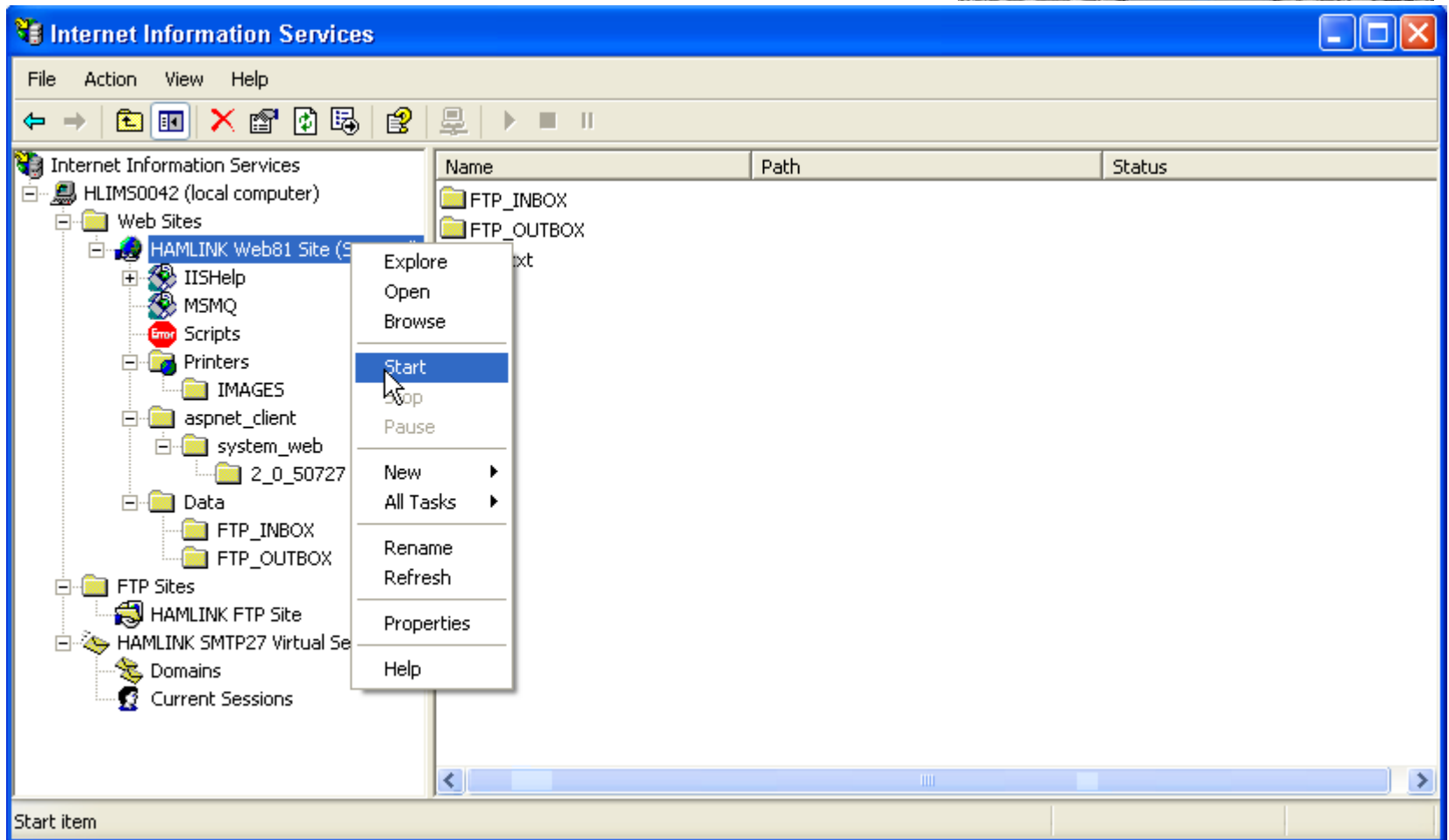
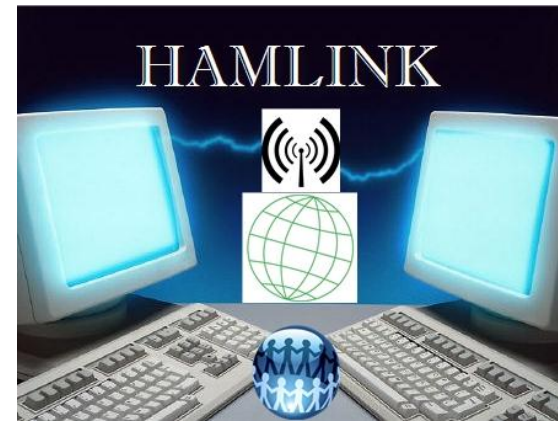
 The page cannot be displayed

The page you are looking for is currently unavailable. The Web site might be experiencing technical difficulties, or you may need to adjust your browser settings.

Please try the following:

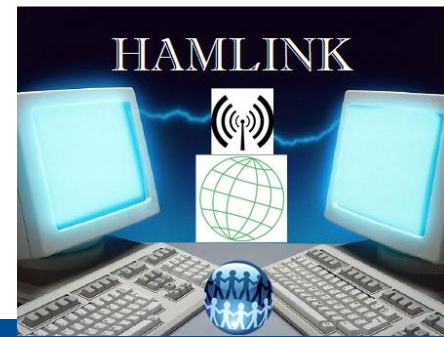
- Click the  Refresh button, or try again later.
- If you typed the page address in the Address bar, make sure that it is spelled correctly.
- To check your connection settings, click the **Tools** menu, and then click **Internet Options**. On the **Connections** tab, click **Settings**. The settings should match those provided by your local area network (LAN) administrator or Internet service provider (ISP).
- See if your Internet connection settings are being detected. You can set Microsoft Windows to examine your network and automatically discover network connection settings (if your network administrator has enabled this setting).
 1. Click the **Tools** menu, and then click **Internet Options**.
 2. On the **Connections** tab, click **LAN Settings**.
 3. Select **Automatically detect settings**, and then click **OK**.
- Some sites require 128-bit connection security. Click the **Help** menu and then click **About Internet Explorer** to determine what strength security you have installed.
- If you are trying to reach a secure site, make sure your Security settings can support it. Click the **Tools** menu, and then click **Internet Options**. On the Advanced tab, scroll to the Security section and check settings for SSL 2.0, SSL

- Restarting the IIS Server



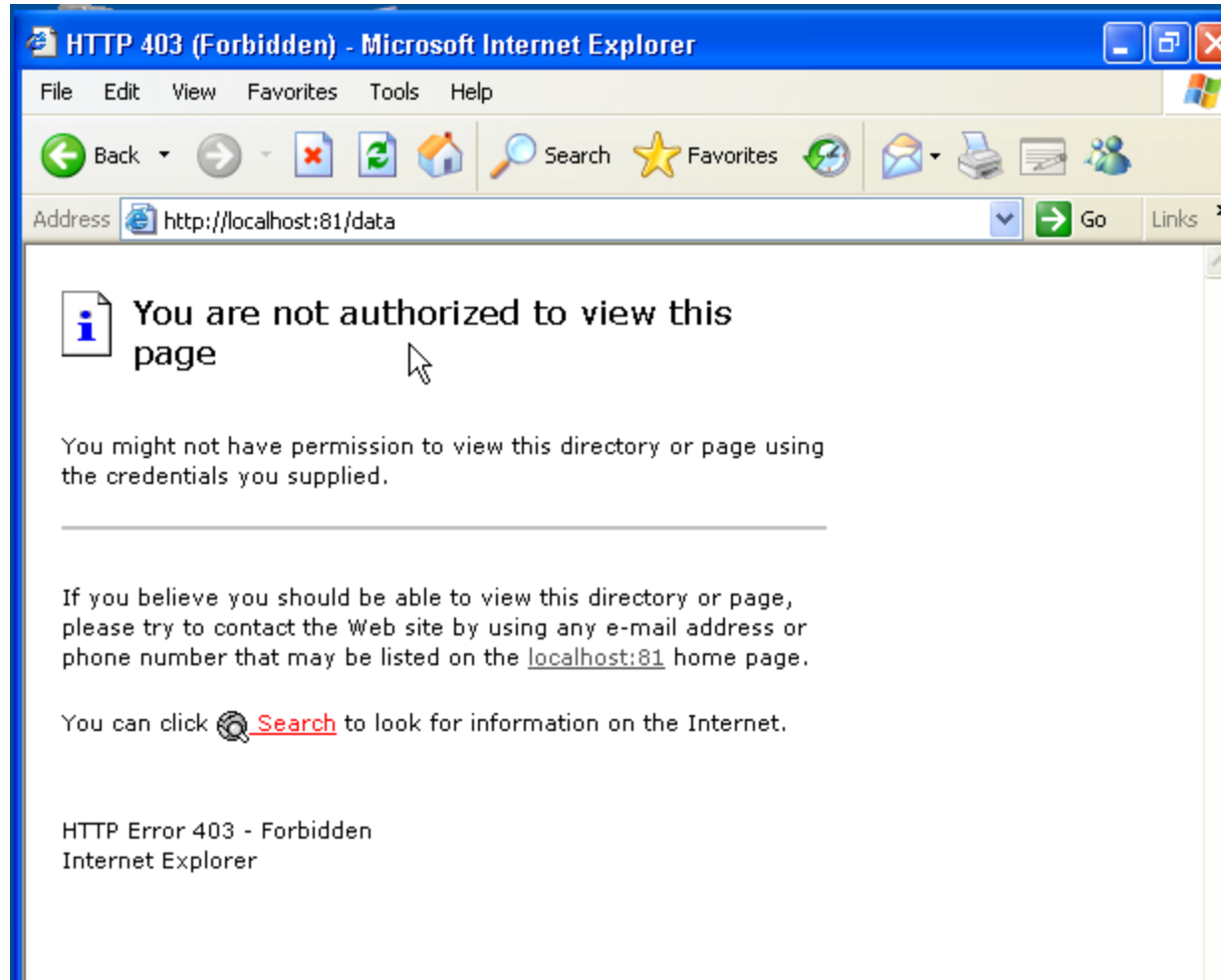
HAMLINK IIS Server

- Default behavior
- Empty of content



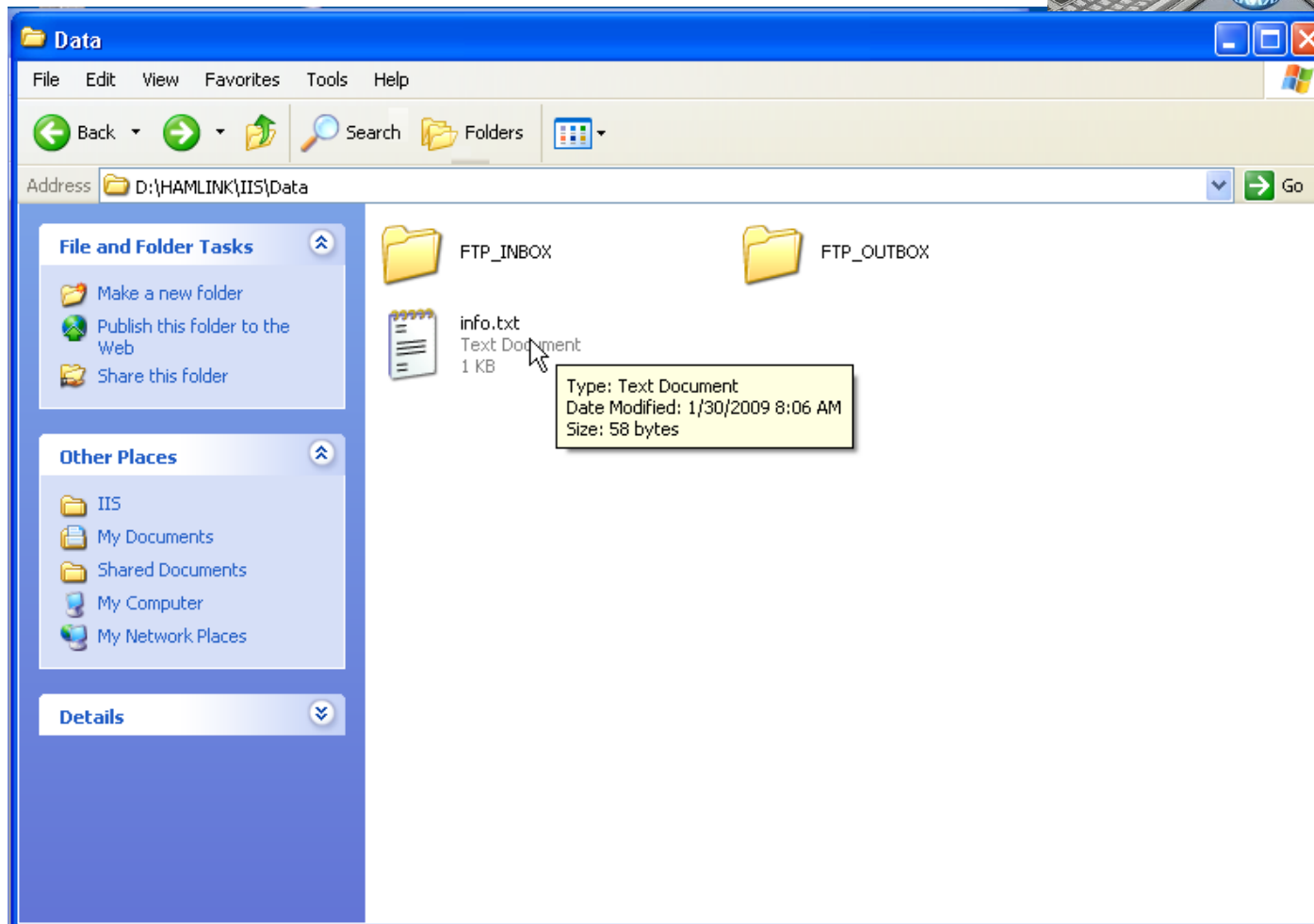
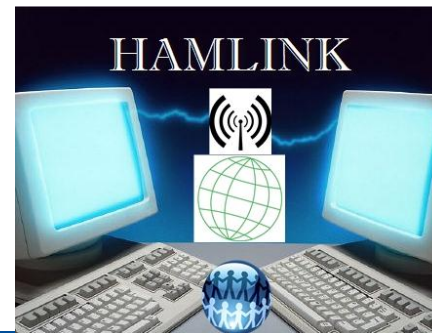
The image shows two overlapping windows from Microsoft Internet Explorer. The background window is titled "Cannot find server - Microsoft Internet Explorer" and shows the address bar with "http://localhost:81/". The main content area displays the Microsoft Windows XP Professional logo and a message: "Your Web service is now running." Below this, it states: "You do not currently have a default Web page established for your users. Any users attempting to connect to your Web site from another machine are currently receiving an Under Construction page. Your Web server lists the following files as possible default Web pages: default.aspx, default.htm, default.asp, index.htm, iisstart.asp. Currently, only iisstart.asp exists." It also provides instructions: "To add documents to your default Web site, save files in d:\hamlink\iis\." The foreground window is titled "HTTP 404 Not Found - Microsoft Internet Explorer" and shows the address bar with "http://localhost/iishelp/". The main content area displays a message: "The page cannot be found. The page you are looking for might have been removed, had its name changed, or is temporarily unavailable." Below this, it lists suggestions: "Please try the following: • If you typed the page address in the Address bar, make sure that it is spelled correctly. • Open the localhost home page, and then look for links to the information you want. • Click the Back button to try another link. • Click Search to look for information on the Internet." At the bottom of the foreground window, it says "HTTP 404 - File not found Internet Explorer". Two red arrows point from the "Your Web service is now running." message in the background window to the "The page cannot be found" message in the foreground window.

Without a default page users see no content.

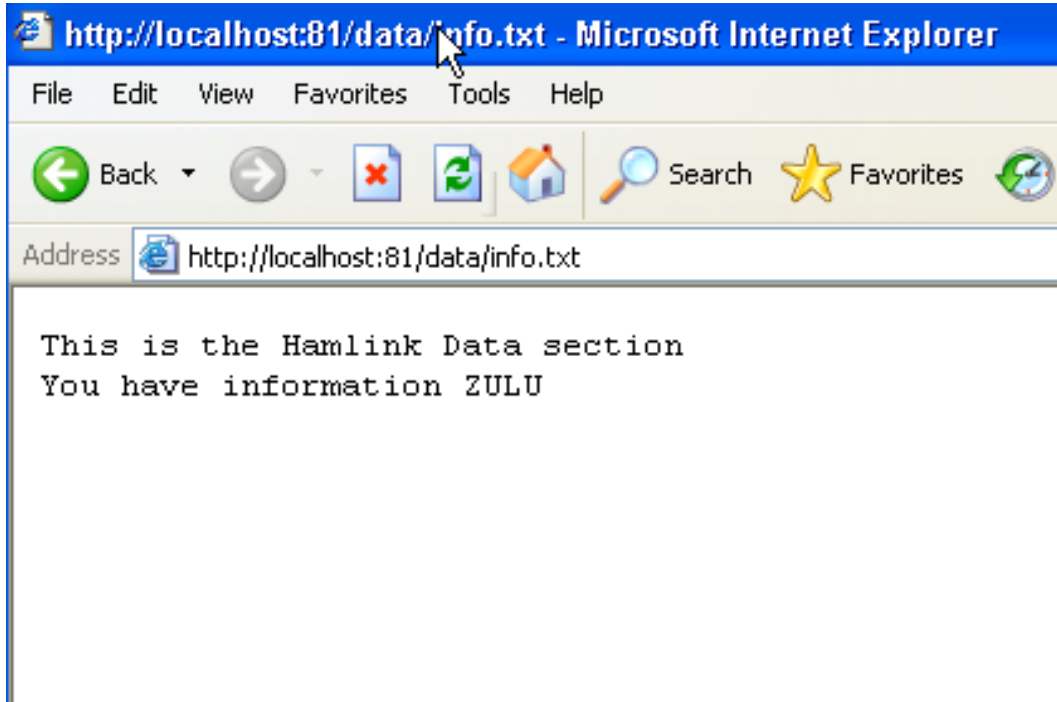
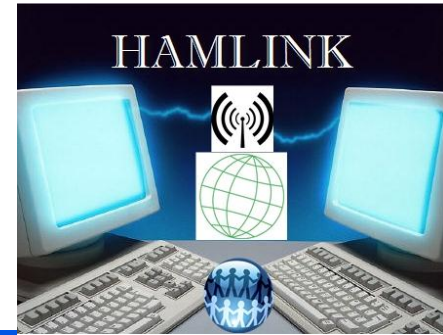


However...

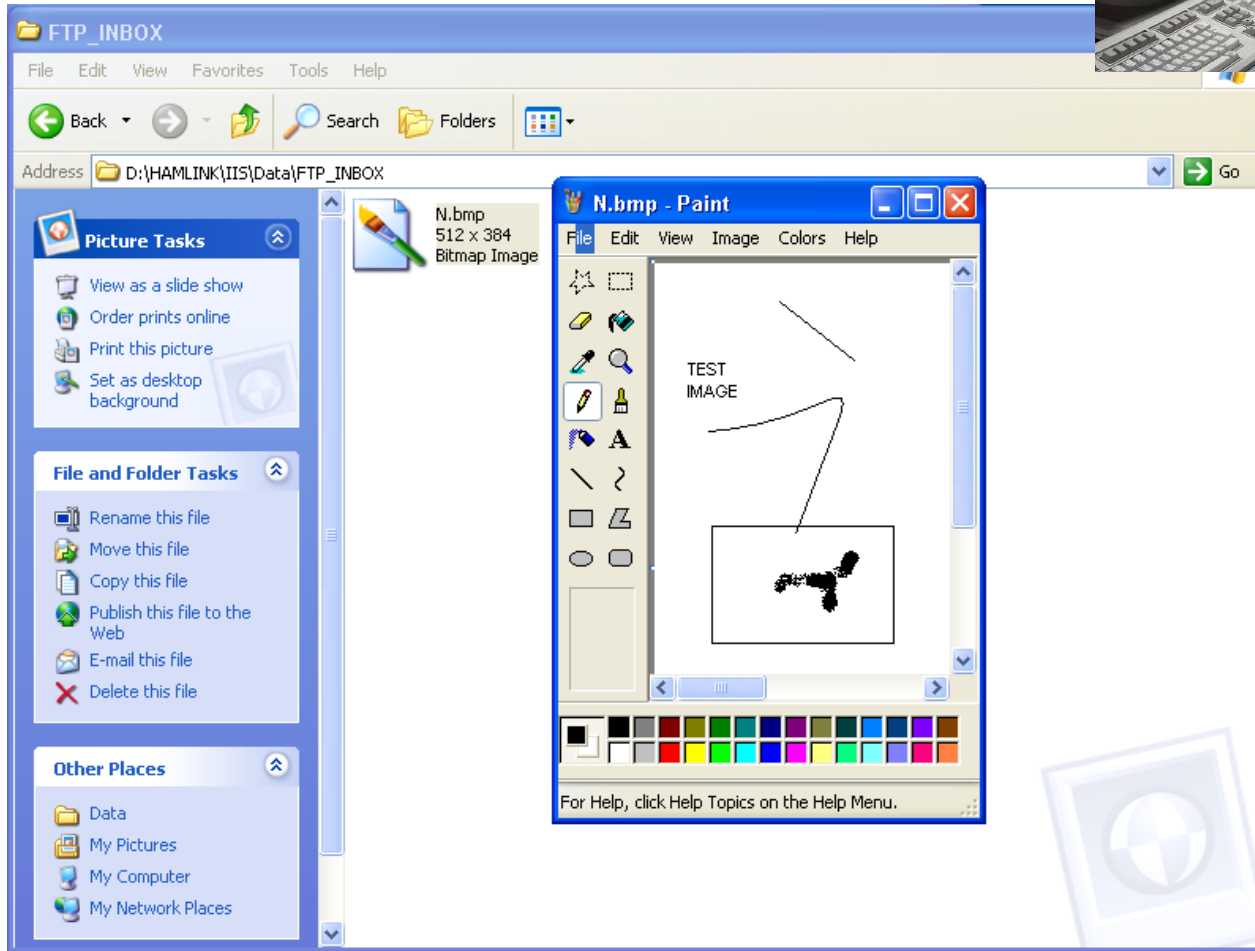
- Individuals “in the know” can get to the important data.



- **Content can be quickly dropped into organized folders**
- AND**
- **Reviewed by the specific group or individual**

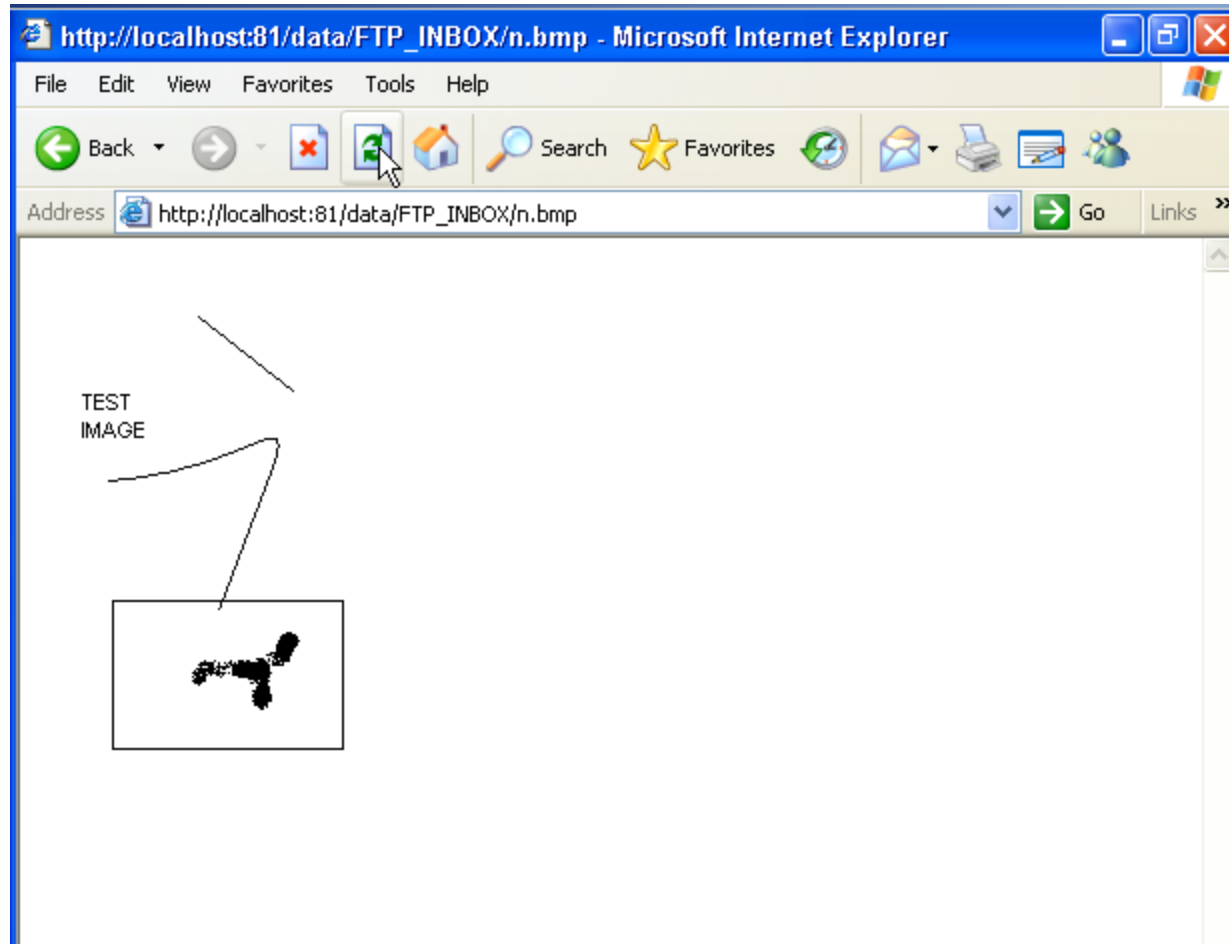


- **Content can be more than just a text file.**



However

- Content is under the control of the Administrator(s).

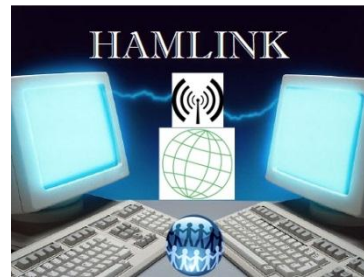




Collaborative Content Sharing of :

- **Text Files**
- **Pictures**
- **SpreadSheets**
- **PDF files**
- **Maps**
- **Plans**
- ***Consider the size of the content if you intent to send it via Radio***

... But what if you have specific long-term predetermined needs ??



Example of Rapid Web Content Development

In this tutorial we are going to display the classic 'Hello World' text in a web page on the IIS Server.

- *As ASP is going to be displayed as part of a web page we first need to create an HTML web page, open up your favorite text editor (ie. Notepad) and type the following.*

```
<html>
<head>
<title>My First ASP Page</title>
</head>
<body bgcolor="white" text="black">
```

- *Next we can begin writing some ASP.*
- *Any ASP needs to be placed in between the tags, <% %>, to indicate server-side script. In this next part we will start the server side script tag and create a variable to hold the text 'Hello World'.*

• Dimension variables

```
<%
Dim strMessage
```

- **Notice I haven't given the variable 'strMessage' a data type, this is because VBScript needs to know a data type.**
- **Now that we have created a variable we give it the value 'Hello World'.**
- **'Place the value Hello World into the variable strMessage**

```
strMessage = "Hello World"
```

- **Once the variable has a value we can now display the contents of the variable in the HTML by using the ASP 'Response.Write' method to place the contents of the variable into the HTTP stream.**
- **'Write the contents of the variable strMessage to the web page**

```
Response.Write (strMessage)
```

Web Content Development - Continued



- **Next we use the 'Response.Write' method to write a line break into the HTML creating a new line before displaying the server time.**
- ***'Write line break into the web page***

Response.Write ("
")

- **Again using the 'Response.Write' method and the VBScript function 'Time()' we now display the server time on the HTML page**

AND

- **close the server side script tag as we have finished using ASP in this part of the web page.**

Response.Write ("The time on the server is: " & Time())

- ***Close the server script***

%>



- **Finally we need to finish the HTML web page by closing the body tag and the HTML tag.**

</body>

</html>

- **Next, call the file, 'default.asp' to make it the root file for a given web folder.**
 - *(don't forget the '.asp' extension)*
- **And Save the file to a directory accessible through your web server**
- **These WEB based folders are located within the 'D:\HAMLINK\IIS\' folder and respective sub-directories**



QUESTIONS?

Resources and References:

Andre Munoz – KD7ZEV@Charter.net

[HTML 4 for Dummies](#)

[HTML - Your Visual blueprint for designing effective Web pages](#)

[ASP NET all-in-one Desktop Reference for Dummies](#)

