

HAMLINK Incident Management System

HAMLINK Bridge

This presentation was supported by a grant from the U.S. Department of Homeland Security



HAMLINK Bridge

- Proposed methods to provide interconnect to the
- **INTRA-NET OR INTER-NET**

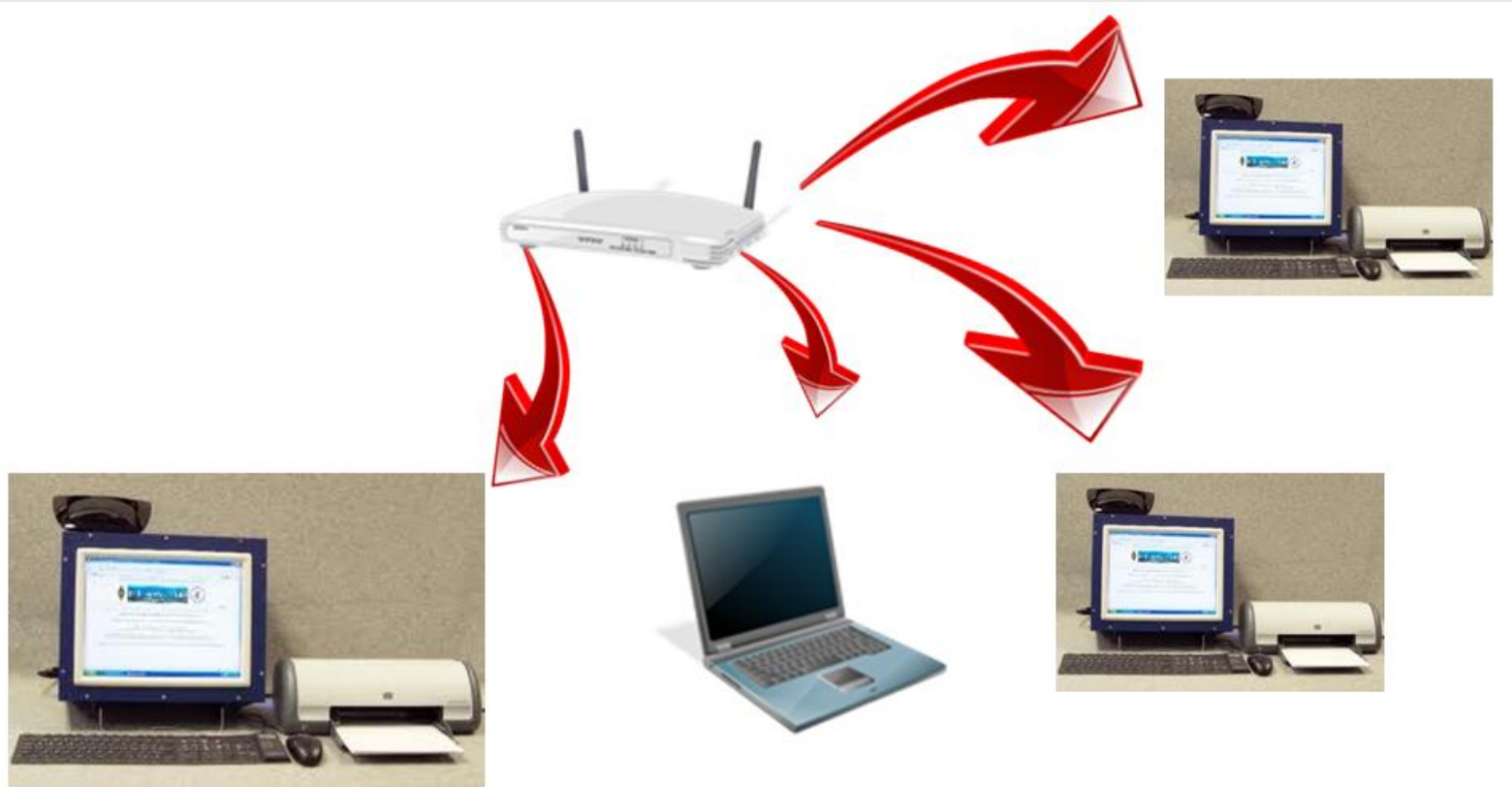
HAMLINK INTERCONNECT

- HAMLINK PC workstations have web-browser capability
- Interconnection can manifest at multiple levels.
- Interconnection can be to INTERNET or INTRANET

HAMLINK - Method A

- Hamlink PCs are interconnected among themselves.
- One or more may act as a shared file server or Web content server.
- Hamlink can provide internal cluster SMTP mail server and WiFi hotspot for additional (laptop) PC's to connect to the network.

HAMLINK - Method A

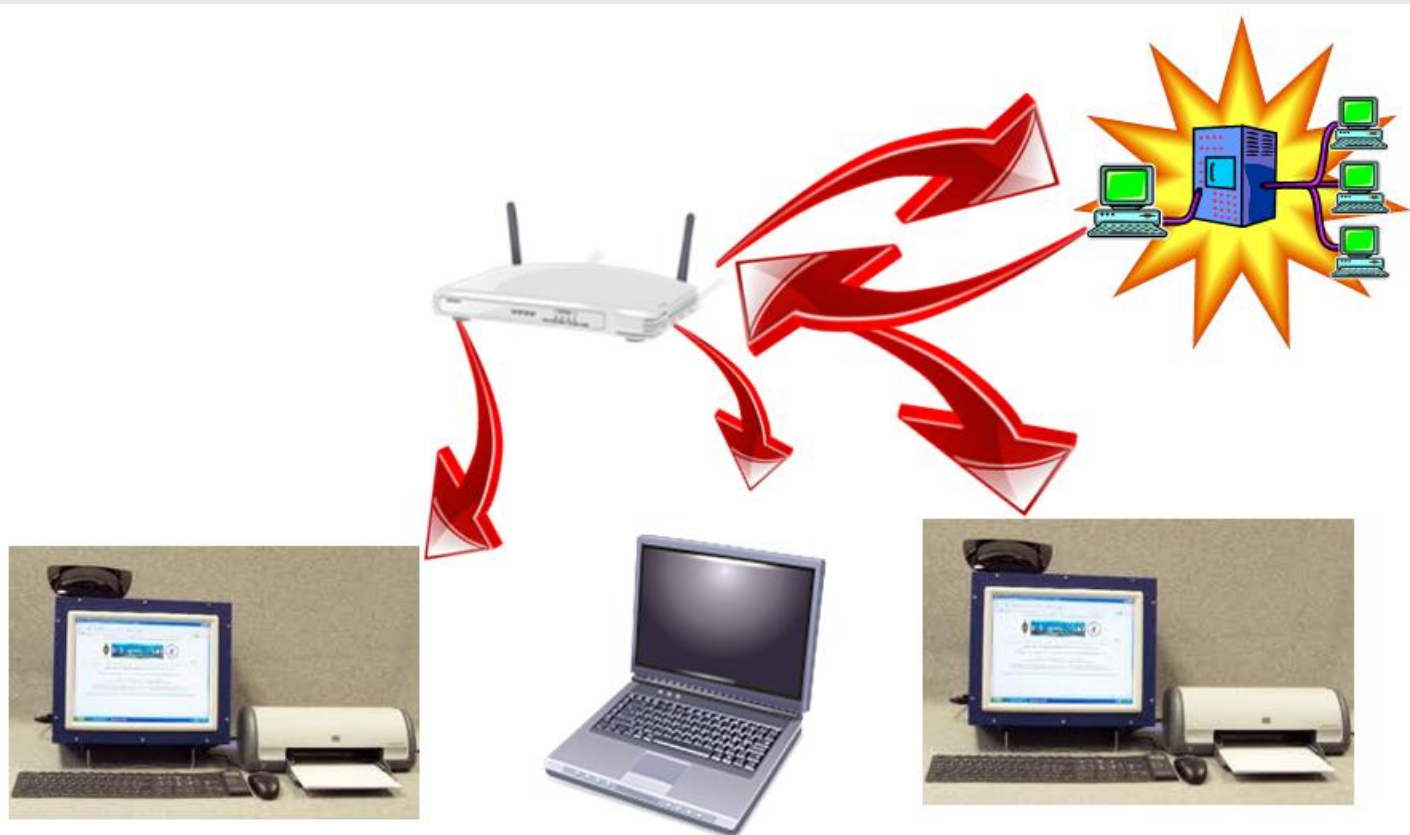


Common INTRANET Collaborative Services among PC's
- NO specific Server -

HAMLINK - Method B

- Hamlink PCs are interconnected among themselves.
- Cluster is hardwire connected to served agency server.
- Hamlink system may be re-configured to attach email to served agency SMTP mail servers.

HAMLINK - Method B

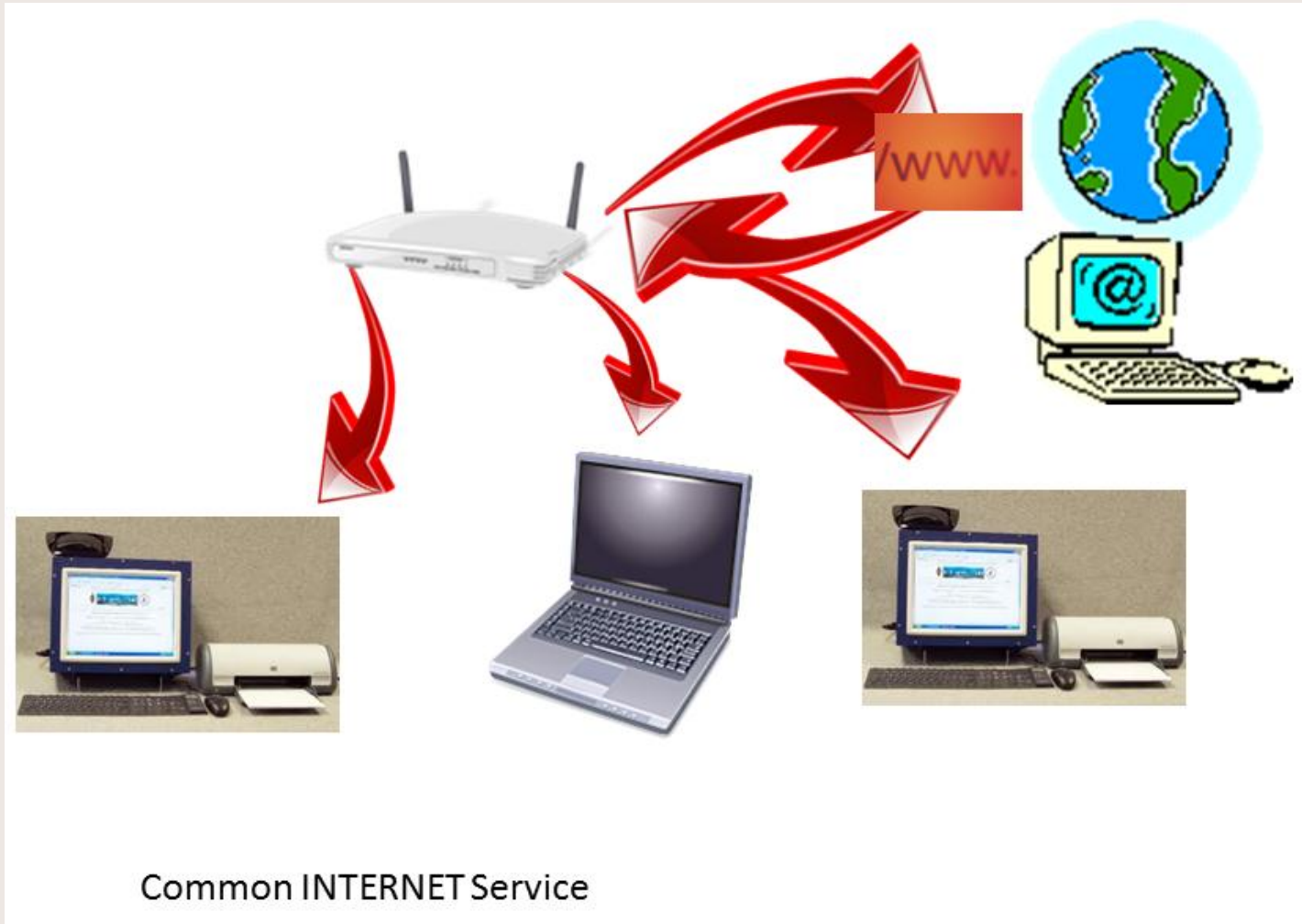


Common INTRANET Services to a Common server.
Server may be HAMLINK or Server Agency(hard-wire connection)

HAMLINK - Method C

- Hamlink PCs are interconnected among themselves.
- Cluster is hardwire connected to Internet Point of Access.
- Hamlink system may be re-configured to attach email to and ISP / Internet SMTP mail servers.

HAMLINK - Method C



Common INTERNET Service

HAMLINK - Method D

- Hamlink PCs are interconnected among themselves.
- Cluster is connected to a WiFi Gateway which interconnects to a local Internet Point of Presence (POP) .
- Hamlink system may be re-configured to attach email to internal or ISP / Internet SMTP mail servers.

HAMLINK - Method D

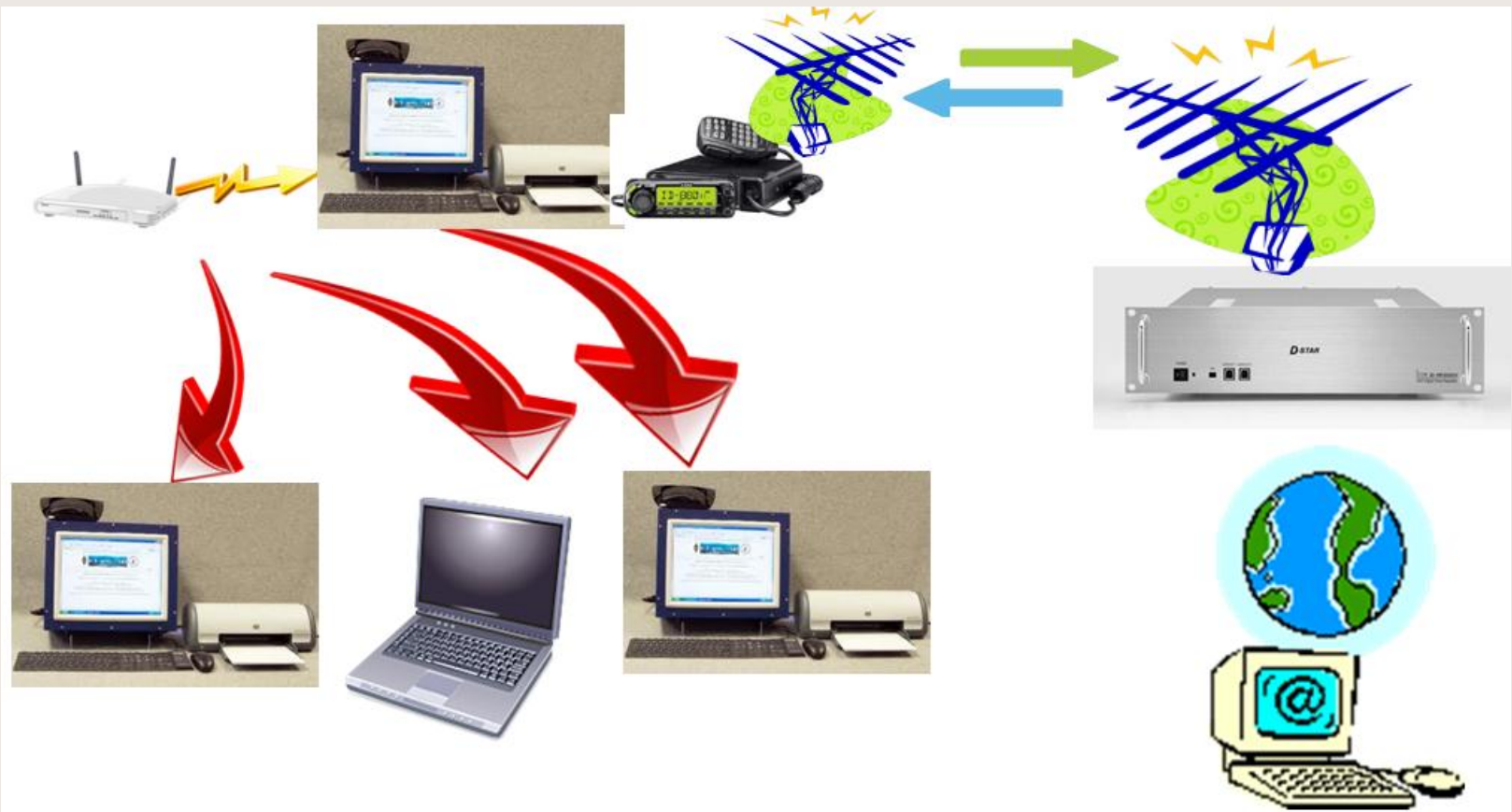


Common INTERNET Service via WiFi Gateway device

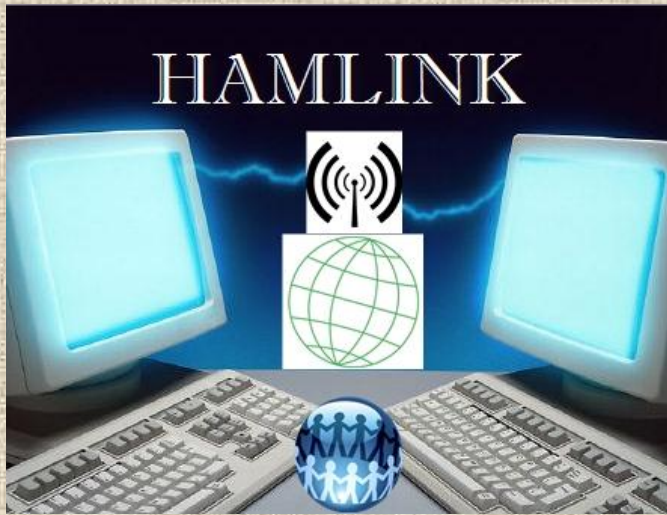
HAMLINK - Method E

- Hamlink PCs are interconnected among themselves with a managed router policy and specific sub-net.
- Cluster is connected to an ARES advance High-Speed Digital RADIO Bridge which has Internet Point of Presence (POP) at remote non-impaired location.

HAMLINK - Method E



Common INTERNET Service via Hamlink Gateway connected through a remote POP.



QUESTIONS?

