

HAMLINK's Radio Message Server - RMS™ Application
Developed by: WINLINK.ORG

Presented by Andre' Munoz – KD7ZEV Technical Assistant Emergency Coordinator WCARES

This presentation was supported by a grant from the U.S. Department of Homeland Security





Full Name: Your Email User Name/Login: Your Email Password:

[\[Home/Help\]](#) [\[ARES-WEBMail@\]](#) [\[Send Radio Email\]](#) [\[Create Radiogram\]](#) [\[List Station Radiograms\]](#)

• **WINLINK™ - RMS Express**

- Application Based Server
- A Remote Radio Message Server (RMS)
- Radio Resource integration with AGW PEPro.
- Application that interfaces with WINLINK's Central Mail Server CMS Stations for Internet email forwarding
- Connecting ARES Radio Email traffic to standard Internet email services via Simple Mail transport Protocols(SMTP)



Full Name: Your Email User Name/Login: Your Email Password:

[\[Home/Help\]](#) [\[ARES-WEBMail@\]](#) [\[Send Radio Email\]](#) [\[Create Radiogram\]](#) [\[List Station Radiograms\]](#)

- **WINLINK™ – RMS Express**

- RMS Packet is ideal to provide a temporary emergency portal for radio e-mail users, or for fixed installation at unattended remote locations where it can provide wireless e-mail communications to the "last mile".
- RMS Packet software is licensed free to amateurs by the Amateur Radio Safety Foundation, Inc.
- Reference: <http://www.winlink.org>



Full Name: Your Email User Name/Login: Your Email Password:

[\[Home/Help\]](#) [\[ARES-WEBMail@\]](#) [\[Send Radio Email\]](#) [\[Create Radiogram\]](#) [\[List Station Radiograms\]](#)

- **WINLINK™ – RMS Express**

- ***System Requirements: 32 or 64 bit Windows OS (Windows XP, Windows Vista, Windows 7 or Windows 2003 Server), or under Windows on the Mac using a VM engine or dual boot arrangement. Windows XP systems require Microsoft .NET v3.5 runtime installed. There are minimal CPU demands with the exception of WINMOR operation. The heavy DSP demands of WINMOR require a computer of at least 700 MHz Pentium/Celeron class and at least 512 Meg of memory.***
- **If multiple applications are running concurrently a faster computer and more RAM may be required.**



Full Name: Your Email User Name/Login: Your Email Password:

[\[Home/Help\]](#) [\[ARES-WEBMail@\]](#) [\[Send Radio Email\]](#) [\[Create Radiogram\]](#) [\[List Station Radiograms\]](#)

• **WINLINK™ – RMS Express**

In order to use Winlink Gateways on the Internet, the radio control operators must agree to the following :

- 1. Maintain a station both online and on the air 24x7x365 days per year.**
- 2. Provide dedicated equipment specifically for Winlink applications.**
- 3. Commit to keeping the software current via continuous connection to the Internet.**
- 4. Commit to use of the station for the purpose of either Emergency Communications or Amateur Radio Community Service.**

If the station fails to operate to the requirements and remains offline for more than 48 hours their gateway license will be revoked and they would have to re-apply.

Repeat offenses may result in being locked out of the WINLINK network.



WINLINK™ - RMS Express

RMS Packet: KD7ZEV-10

File Disconnect Link Logs Help

- Site Properties...
- Packet Channels...
- Reset TNC
- Reset CMS Link
- Restore Settings from ini F
- Exit

Winlink will issue you password & Keycode upon registration

Site Properties

Site Data

Base Callsign (no SSID): Operating Hours:

Password: TCP/IP Timeout (seconds):

Keycode:

Grid square (6 character): Start Minimized

Use direct access to TNC Emergency Communications Station

Use AGW Packet Engine to Access TNC Archive Old Logs

Use BPQ32 to Access TNC Use External DNS

Use RMS Relay RMS Relay Address:

Sysop Data

Sysop Name: Sysop email (non-Winlink):

Street address 1: Sysop Web Site URL (optional):

Street address 2: Phone numbers (optional):

City: Additional information (optional):

State/Province:

Country:

Postal code:



WINLINK™ - RMS Express

RMS Packet: KD7ZEV-10

- File
- Disconnect Link
- Logs
- Help
- Site Properties...
- Packet Channels...
- Reset TNC
- Reset CMS Link
- Restore Settings from ini File...
- Exit

AGW Packet Engine Configuration

Configure the AGW Packet Engine

AGW Packet Engine Callsign: Use AGW Packet Engine on Remote Computer

IP Address to Packet Engine: AGW ID:

AGW Packet Engine IP Port: AGW Password:

Grid Square of TNC Location:

Path to the AGW Packet Engine:

Configure a Port on the AGW Packet Engine

There are 1 port(s) available with the selected TNC - Select a port to configure: Enable This Port

Selected Port:

Port Frequency (MHz): Maximum Streams:

On-Air Baud Rate: Max Frames: Beacon Transmission Interval (Minutes):

Power (Watts): Packet Length: Enable Beacon

Antenna Direction: Antenna Gain (db):

Antenna Height AGL Feet:

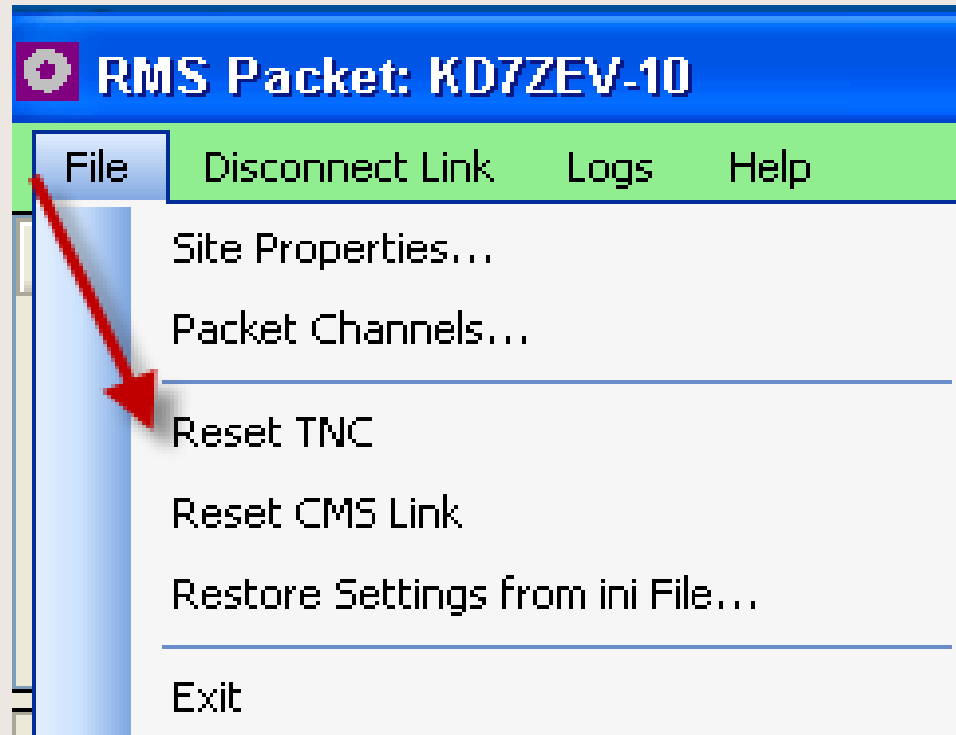
Optional Beacon Text:

Destination: Path:

Optional Login Message:



WINLINK™ - RMS Express





WINLINK™ - RMS Express

Operational RMS Station

A screenshot of the RMS Packet: KD7ZEV-10 software interface. The window title is "RMS Packet: KD7ZEV-10". The menu bar includes "File", "Disconnect Link", "Logs", and "Help". Below the menu bar is a table with columns: "Port", "Stream", "Callsign", "Start Time", and "Telnet Server". The table is currently empty. Below the table are two panels: "Packet Channel Events" and "Telnet Channel Events". The "Packet Channel Events" panel shows three lines of green text: "**** KD7ZEV-10 logged in to AGW", "**** AGWPE initialization successful @ 2011/11/15 05:05:54", and "**** Ready...". The "Telnet Channel Events" panel shows two lines of green text: "**** Starting Version 2.1.0.4" and "**** Initializing RMS Packet - Please standby...". At the bottom of the window, a status bar displays "Time: 2011/11/15 05:06 UTC -- Connections since 0000 UTC: Port 1 - 2".



WINLINK™ - RMS Express

Impaired RMS Station

A screenshot of a software window titled "RMS Packet: KD7ZEV-10". The window has a blue title bar with standard minimize, maximize, and close buttons. Below the title bar is a red menu bar with the following items: "File", "Disconnect Link", "Logs", and "Help". Underneath the menu bar is a header area with several columns: "Port", "Stream", "Callsign", "Start Time", and "Telnet Server". The main area of the window is divided into two vertical panels. The left panel is titled "Packet Channel Events" and contains two lines of green text: "**** Closing server thread ..." and "**** AGWPE released". The right panel is titled "Telnet Channel Events" and contains two lines of green text: "**** Resetting the CMS link...standby" and "**** Linked to Perth.Winlink.org". At the bottom of the window, a status bar displays the text: "Time: 2011/11/15 05:12 UTC -- Connections since 0000 UTC: Port 1 - 2".



WINLINK™ - RMS Express

Actively In-use RMS Station

RMS Packet: KD7ZEV-10

File Disconnect Link Logs Help

Port	Stream	Callsign	Start Time	Telnet Server
1	A	WA6MTY-9	2011/11/15 05:21	Wien.Winlink.org
1	C	KD7ZEV-9	2011/11/15 05:21	Perth.Winlink.org
1	B	STMARY	2011/11/15 05:22	connecting...

Packet Channel Events	Telnet Channel Events
<pre>[10] *** CONNECTED To Station WA6MTY-9 [10] [WL2K-2.7.0.6-B2FWIHJM\$] [10] ;PQ: 44022992Wien CMS via KD7ZEV-10 > [11] *** CONNECTED To Station STMARY [12] *** CONNECTED To Station KD7ZEV-9 [12] [WL2K-2.7.0.6-B2FWIHJM\$] [12] ;PQ: 78370080Perth CMS via KD7ZEV-10 > [11] *** DISCONNECTED From Station STMARY [12] ;Fw: KD7ZEV-9 KD7ZEV WASHOE-1 WASHOE-2 [12] [Paclink-3.0.3.0-N09B2FIHM\$] [12] ;PR: 37482756 [12] ; KD7ZEV-10 DE KD7ZEV-9 (DM09AA) QTC 0... [11] *** CONNECTED To Station STMARY</pre>	<pre>[11] Connecting STMARY to Wien.Winlink.org [11] Connected... [11] Callsign : [11] .STMARY</pre>

Time: 2011/11/15 05:22 UTC -- Connections since 0000 UTC: Port 1 - 8



WINLINK™ - RMS Express

Actively In-use PACLINK Transmitting to RMS Station

A screenshot of the Paclink - KD7ZEV-9 software window. The window has a blue title bar and a menu bar with 'File', 'Connect', 'Abort', 'Logs', 'Update', 'Help', and 'No CMS Connection'. The main area is split into two panes. The left pane shows a log of events: starting a packet channel, connecting to a packet engine, registering with an AGW engine, connecting to KD7ZEV-10, and receiving an email from WASHOE-1. The right pane shows the details of the received email, including the sender (WASHOE-1), subject (//WL2K This is a test email), and the email body (Wien CMS via KD7ZEV-10 >). The status bar at the bottom shows 'Idle' and 'To Clients: 5 To Winlink: 0'.

```
Paclink - KD7ZEV-9
File Connect Abort Logs Update Help No CMS Connection

**** Starting Packet Channel: KD7ZEV -Port1 at 1999/01/02 05:30:31
**** Connecting to Packet Engine
**** Registering KD7ZEV-9 with AGW Engine
KD7ZEV-9 **** REGISTERED to AGWPE
**** Connecting to KD7ZEV-10
**** CONNECTED to KD7ZEV-10
**** CONNECTED With Station KD7ZEV-10 at 1999/01/02 05:30:33 UTC
[WL2K-2.7.0.6-B2FWIHJM$]
.PQ: 86089190
Wien CMS via KD7ZEV-10 >
.Pw: KD7ZEV-9 KD7ZEV WASHOE-1 WASHOE-2
[Paclink-3.0.3.0-N09B2FIHM$]
.PR: 84414237
; KD7ZEV-10 DE KD7ZEV-9 (DM09AA) QTC 1...
FC EM MWKQATIWOAE0 466 181 0
F> 94
FS Y
**** Sending MWKQATIWOAE0...
FF
FQ
**** DISCONNECTED from KD7ZEV-10
**** TCP DISCONNECT from PACKET ENGINE
**** Closing KD7ZEV -Port1 at 1999/01/02 05:31:20

POP3 link from WASHOE-1 at
1999/01/02 05:27:41
POP3 link from WASHOE-1 at
1999/01/02 05:27:45
SMTP link from WASHOE-1 at
1999/01/02 05:28:57
MWKQATIWOAE0 received
from WASHOE-1
Subject: //WL2K This is a
test email
POP3 link from WASHOE-1 at
1999/01/02 05:28:58

Idle ----- To Clients: 5 To Winlink: 0
```



WINLINK™ - RMS Express

RMS Actively Receiving from a PACLINK Station

The screenshot shows a window titled "RMS Packet: KD7ZEV-10" with a menu bar (File, Disconnect Link, Logs, Help) and a toolbar (Port, Stream, Callsign, Start Time, Telnet Server). The main area is split into two panes: "Packet Channel Events" and "Telnet Channel Events".

Packet Channel Events:

```
[10] *** CONNECTED To Station KD7ZEV-9
[10] [wL2K-2.7.0.6-B2FwIHJM$]
[10] ;PQ: 86089190Wien CMS via KD7ZEV-10 >
[10] ;Fw: KD7ZEV-9 KD7ZEV WASHOE-1 WASHOE-2
[10] [Paclink-3.0.3.0-N09B2FIHM$]
[10] ;PR: 84414237
[10] ; KD7ZEV-10 DE KD7ZEV-9 (DM09AA) QTC 1...
[10] FC EM MWKQATIWOAE0 466 181 0
[10] F> 94
[10] FS Y
[10] FF
[10] FQ
[10] *** DISCONNECTED From Station KD7ZEV-9
```

Telnet Channel Events:

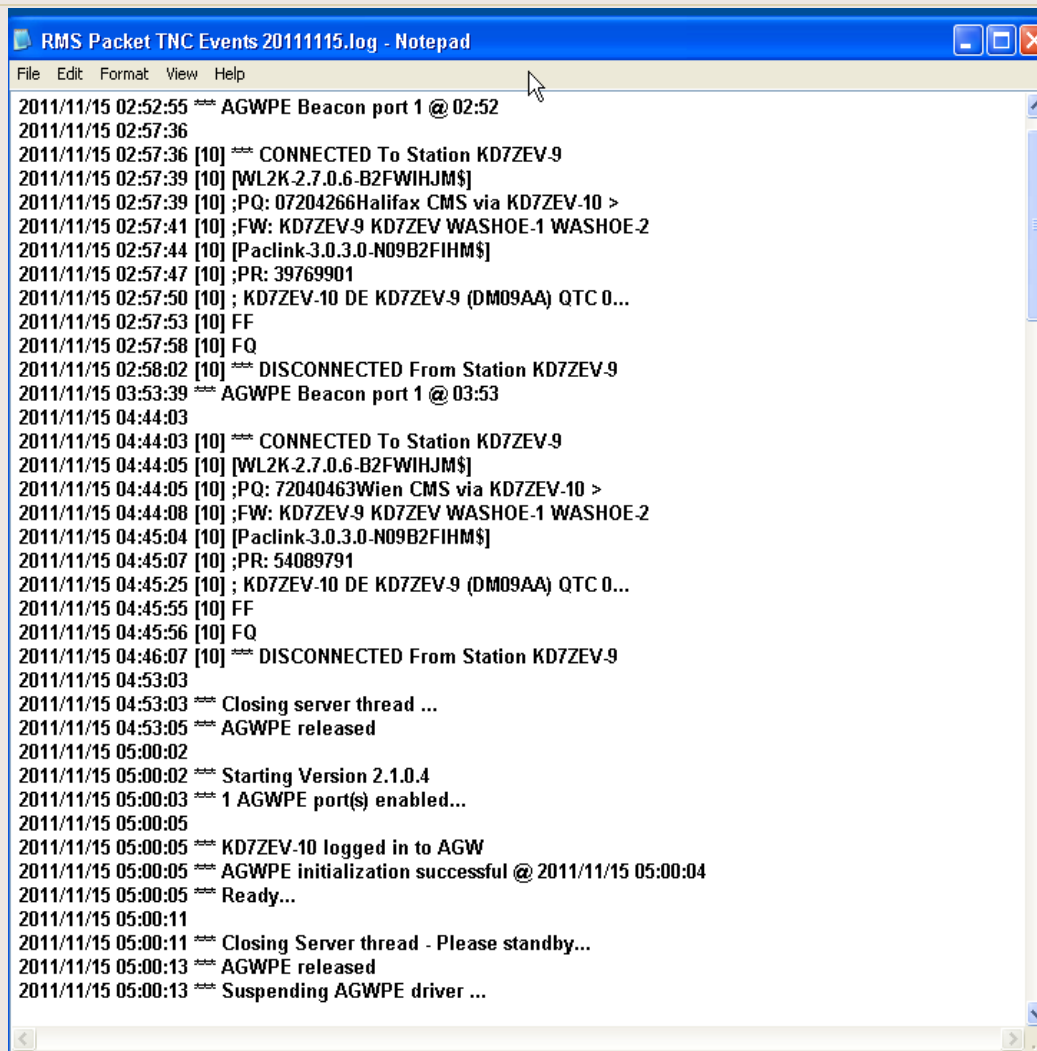
```
[10] Connecting KD7ZEV-9 to Wien.Winlink.org
[10] Connected...
[10] Callsign :
[10] .KD7ZEV-9
[10] Password :
[10] CMSTelnet KD7ZEV-10 144910000 0
[10] [wL2K-2.7.0.6-B2FwIHJM$]
[10] ;PQ: 86089190
[10] Wien CMS via KD7ZEV-10 >
[10] ;Fw: KD7ZEV-9 KD7ZEV WASHOE-1 WASHOE-2
[10] [Paclink-3.0.3.0-N09B2FIHM$]
[10] ;PR: 84414237
[10] ; KD7ZEV-10 DE KD7ZEV-9 (DM09AA) QTC 1...
[10] FC EM MWKQATIWOAE0 466 181 0
[10] F> 94
[10] FS Y
[10] FF
[10] FQ
[10] Disconnected
```

Time: 2011/11/15 05:30 UTC -- Connections since 0000 UTC: Port 1 - 10

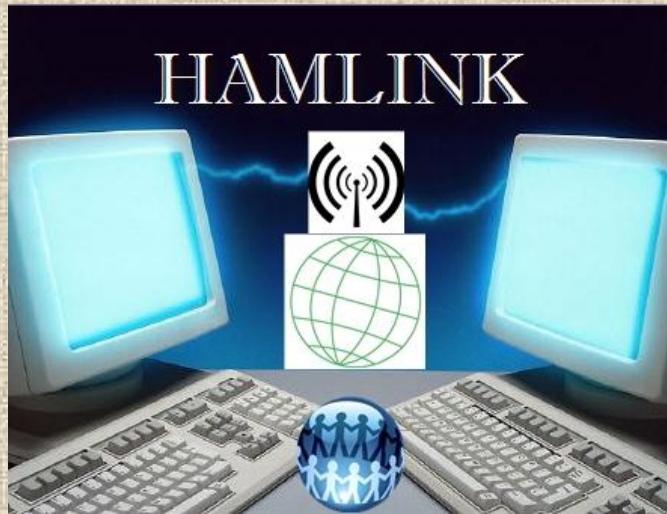


WINLINK™ - RMS Express

Reviewing RMS Logs

A screenshot of a Notepad window titled "RMS Packet TNC Events 20111115.log". The window has a blue title bar and a menu bar with "File", "Edit", "Format", "View", and "Help". The main text area contains a log of events from 2011/11/15. The log entries are as follows:

```
2011/11/15 02:52:55 *** AGWPE Beacon port 1 @ 02:52
2011/11/15 02:57:36
2011/11/15 02:57:36 [10] *** CONNECTED To Station KD7ZEV-9
2011/11/15 02:57:39 [10] [WL2K-2.7.0.6-B2FWIHJM$]
2011/11/15 02:57:39 [10] ;PQ: 07204266Halifax CMS via KD7ZEV-10 >
2011/11/15 02:57:41 [10] ;FW: KD7ZEV-9 KD7ZEV WASHOE-1 WASHOE-2
2011/11/15 02:57:44 [10] [Paclink-3.0.3.0-N09B2FIHM$]
2011/11/15 02:57:47 [10] ;PR: 39769901
2011/11/15 02:57:50 [10] ; KD7ZEV-10 DE KD7ZEV-9 (DM09AA) QTC 0...
2011/11/15 02:57:53 [10] FF
2011/11/15 02:57:58 [10] FQ
2011/11/15 02:58:02 [10] *** DISCONNECTED From Station KD7ZEV-9
2011/11/15 03:53:39 *** AGWPE Beacon port 1 @ 03:53
2011/11/15 04:44:03
2011/11/15 04:44:03 [10] *** CONNECTED To Station KD7ZEV-9
2011/11/15 04:44:05 [10] [WL2K-2.7.0.6-B2FWIHJM$]
2011/11/15 04:44:05 [10] ;PQ: 72040463Wien CMS via KD7ZEV-10 >
2011/11/15 04:44:08 [10] ;FW: KD7ZEV-9 KD7ZEV WASHOE-1 WASHOE-2
2011/11/15 04:45:04 [10] [Paclink-3.0.3.0-N09B2FIHM$]
2011/11/15 04:45:07 [10] ;PR: 54089791
2011/11/15 04:45:25 [10] ; KD7ZEV-10 DE KD7ZEV-9 (DM09AA) QTC 0...
2011/11/15 04:45:55 [10] FF
2011/11/15 04:45:56 [10] FQ
2011/11/15 04:46:07 [10] *** DISCONNECTED From Station KD7ZEV-9
2011/11/15 04:53:03
2011/11/15 04:53:03 *** Closing server thread ...
2011/11/15 04:53:05 *** AGWPE released
2011/11/15 05:00:02
2011/11/15 05:00:02 *** Starting Version 2.1.0.4
2011/11/15 05:00:03 *** 1 AGWPE port(s) enabled...
2011/11/15 05:00:05
2011/11/15 05:00:05 *** KD7ZEV-10 logged in to AGW
2011/11/15 05:00:05 *** AGWPE initialization successful @ 2011/11/15 05:00:04
2011/11/15 05:00:05 *** Ready...
2011/11/15 05:00:11
2011/11/15 05:00:11 *** Closing Server thread - Please standby...
2011/11/15 05:00:13 *** AGWPE released
2011/11/15 05:00:13 *** Suspending AGWPE driver ...
```



QUESTIONS?

Reference:

<http://www.winlink.org/EmComm>

<http://www.winlink.org/ClientSoftware>

<http://www.winlink.org/CMSStatus>

<http://www.winlink.org/RMSHFStatus>

