

HAMLINK's PACLINK Mail Forwarding Application
Developed by: WINLINK.ORG

Presented by Andre' Munoz – KD7ZEV Technical Assistant Emergency Coordinator WCARES

This presentation was supported by a grant from the U.S. Department of Homeland Security





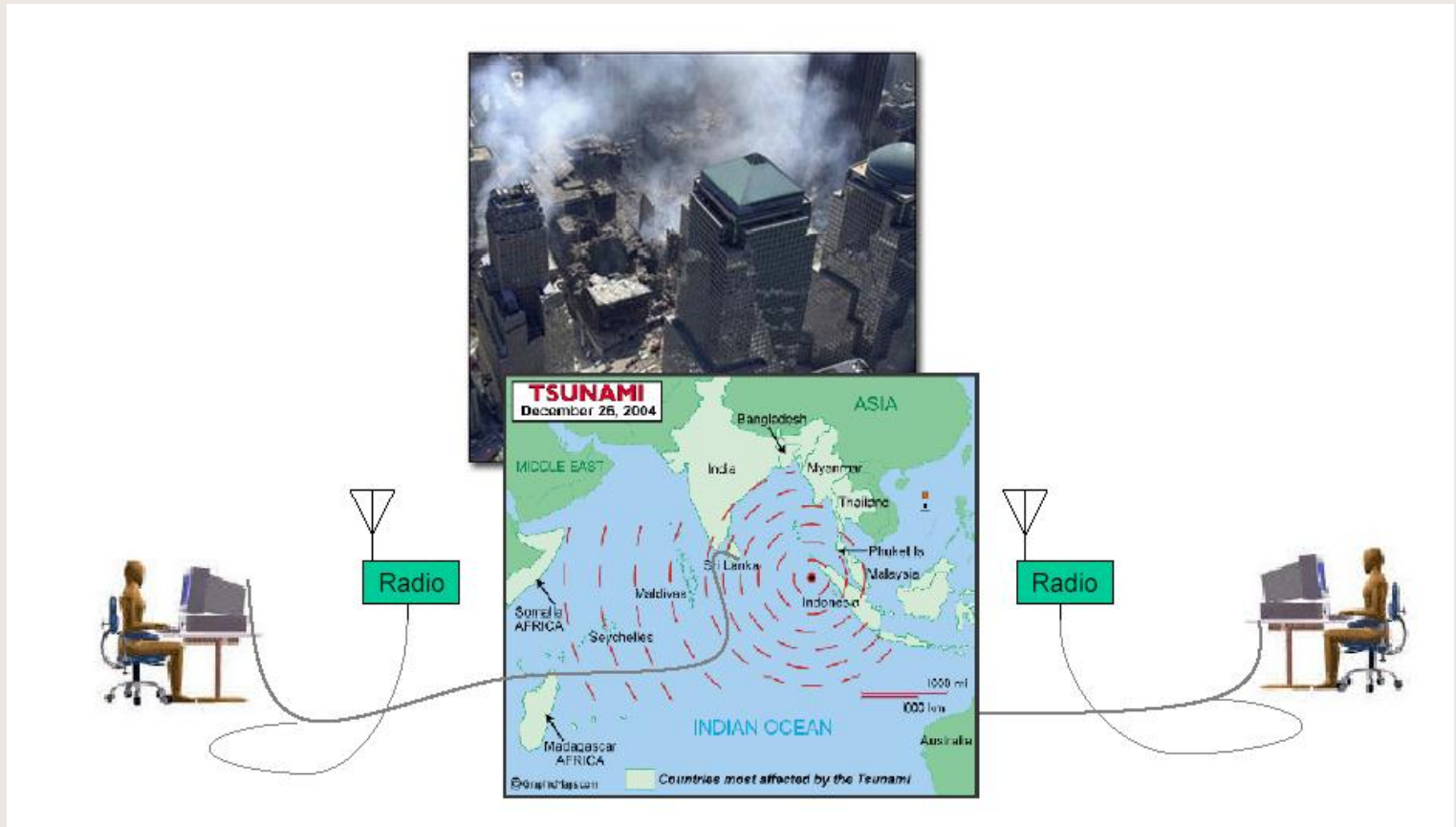
Full Name: Your Email User Name/Login: Your Email Password:

[\[Home/Help\]](#) [\[ARES-WEBMail@\]](#) [\[Send Radio Email\]](#) [\[Create Radiogram\]](#) [\[List Station Radiograms\]](#)

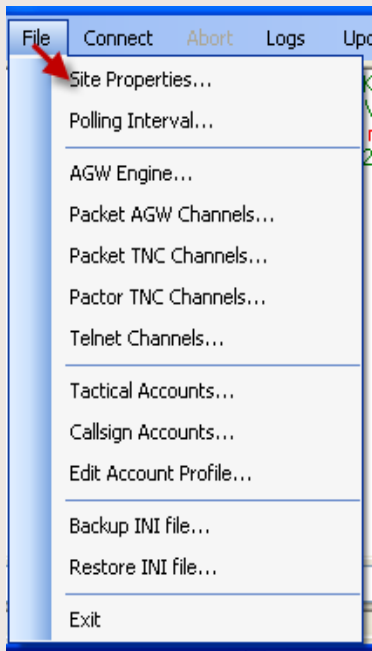
• **WINLINK™ - PACLINK MAIL SERVER**

- Application Based Server.
- Mail Server.
- Radio Resource integration.
- Intranet hub that interfaces with WINLINK RMS Stations for Internet email forwarding
- Connecting Community volunteers to standard email services.

WINLINK™ - PACLINK MAIL SERVER



WINLINK™ - PACLINK MAIL SERVER

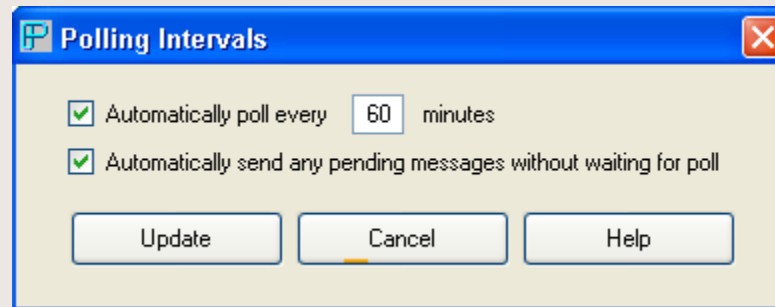
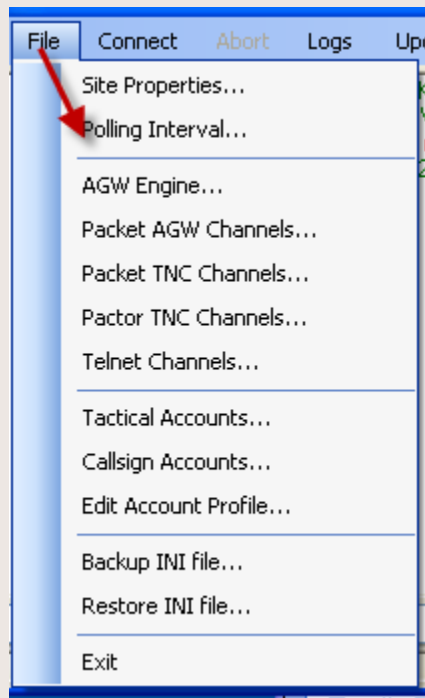


The image shows the 'Paclink Site Properties' dialog box. The title bar reads 'Paclink Site Properties'. The main text says 'Enter the properties for this Paclink instance . . .'. The dialog contains several configuration fields:

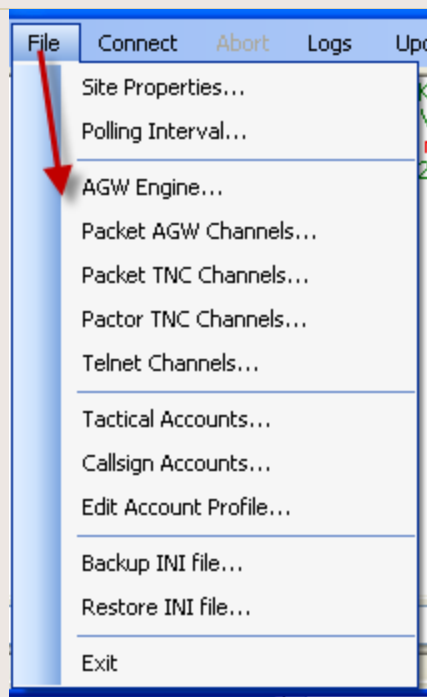
- Callsign including optional SSID:
- Local IP Address:
- Password (for secure login only):
- Callsign ID Prefix:
- Password (for POP3/SMTP):
- Callsign ID Suffix:
- Site grid square:
- Enable automatic program updates:
- Message size limit (compressed):
- Use Secure Login:
- SMTP Port Number:
- LAN Accessible:
- POP3 Port Number:
- Range and Bearing Display:
- Add this account to Outlook Express:
- Use external DNS:

At the bottom, there are two radio buttons for connection type: 'Connect directly to CMS telnet port' (selected) and 'Connect via RMS Relay telnet port'. To the right of the second radio button is a text field for 'IP address of RMS Relay:'. Below the radio buttons is a warning message: 'Do not change the SMTP/POP3 port numbers unless a port number conflict is reported with another service on the same machine. Port Numbers must match in both Paclink and your mail client account setup.' At the very bottom are three buttons: 'Update', 'Close', and 'Help'.

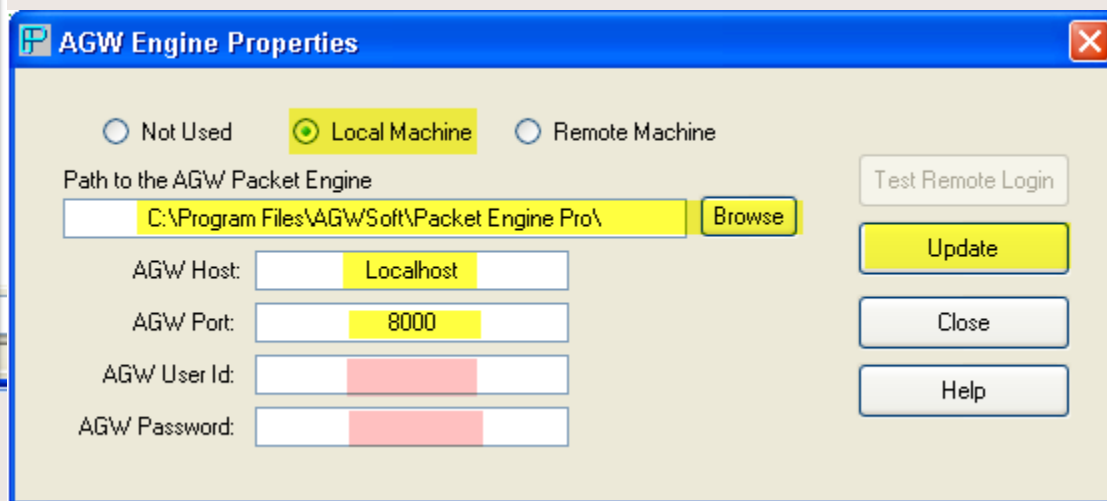
WINLINK™ - PACLINK MAIL SERVER



WINLINK™ - PACLINK MAIL SERVER



Selecting the AGW Engine



WINLINK™ - PACLINK MAIL SERVER

Paclink - KD7ZEV-9

- File
- Connect
- Abort
- Logs
- Update
- Help
- Ne...

Site Properties...
Polling Interval...
AGW Engine...
Packet AGW Channels...
Packet TNC Channels...
Factor TNC Channels...
Telnet Channels...
Tactical Accounts...
Callsign Accounts...
Edit Account Profile...
Backup INI file...
Restore INI file...
Exit

Selecting Packet AGW Channels

Packet AGW Channels

Channel name: KD7ZEV-Port1 Remote callsign: KD7ZEV-10

Channel priority: 3 Channel enabled: Activity timeout: 4 minutes

AGW engine port: 1: KPC3+ Frequency:VHF 1200 144.91MHZ Port:COM1

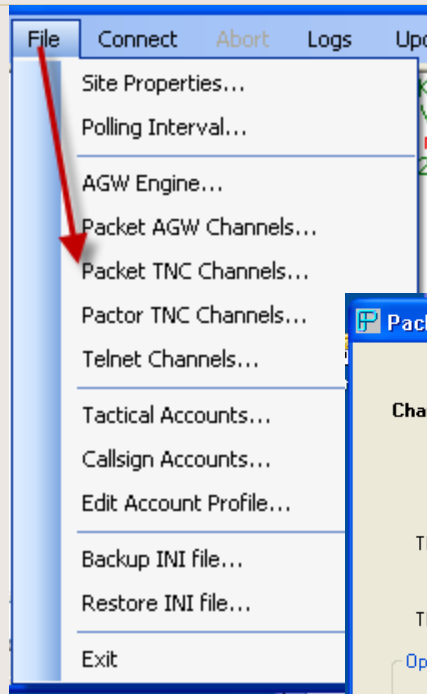
Optional connect script:

Get Remote Port Information Packet length: 128 Max frames outstanding: 1 Connect/Script inactivity timeout: 60 seconds

Add New Channel Remove This Channel Update The Channel Close Help

WINLINK™ - PACLINK MAIL SERVER

Selecting Packet TNC Channels (DIRECT Connections)

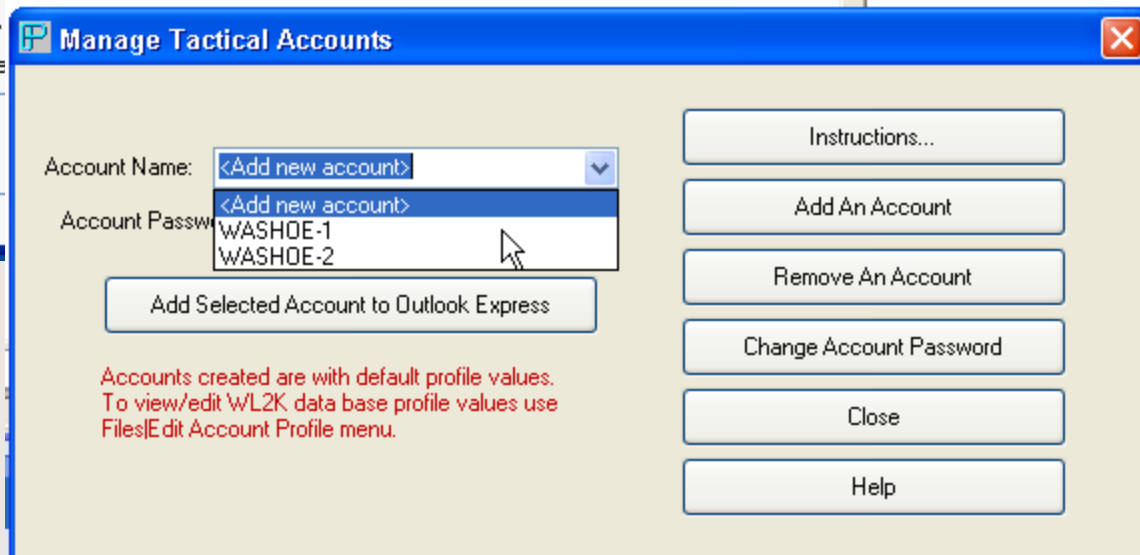
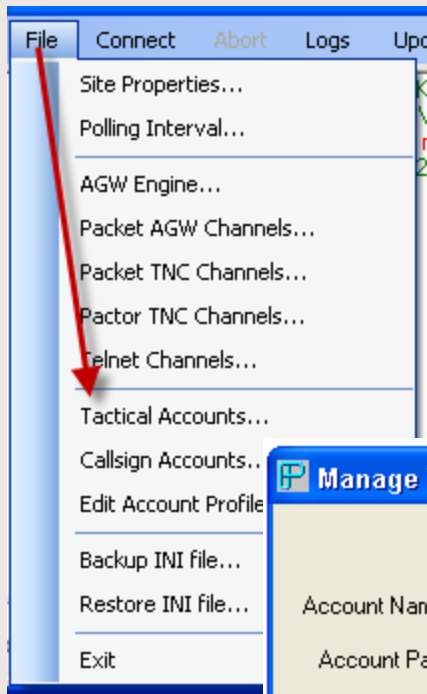


The 'Packet TNC Channels' configuration dialog box is shown. It contains the following fields and options:

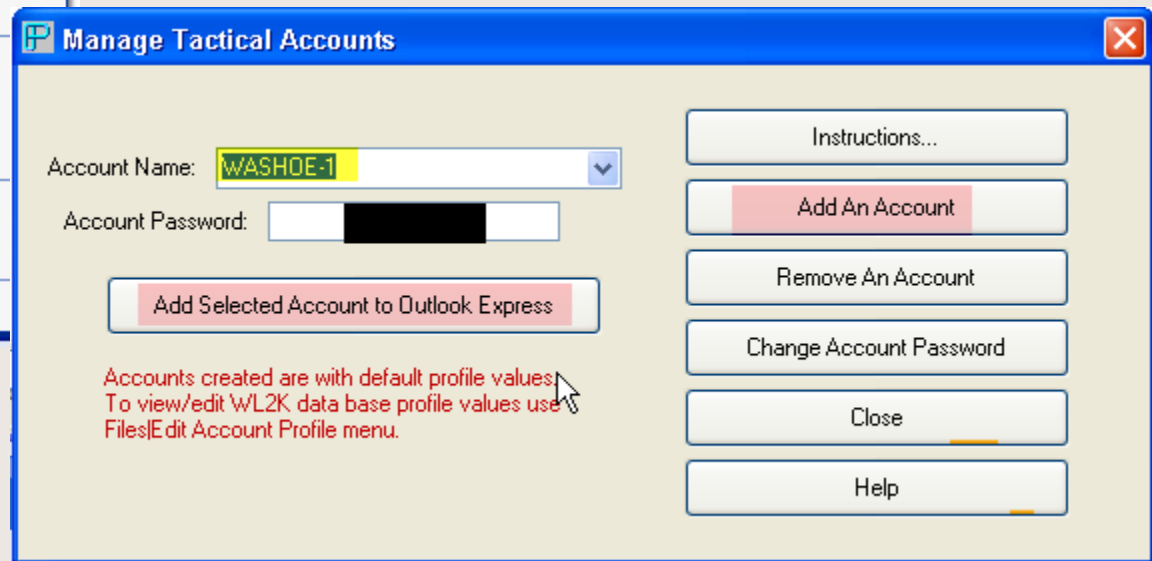
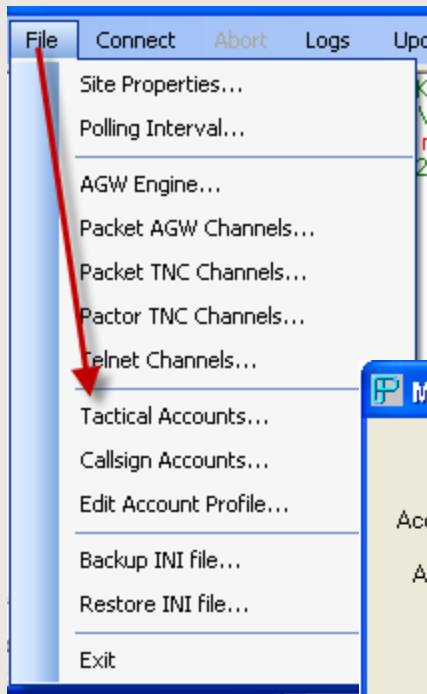
- Channel name:** KPC3-DIRECT KD7ZEV-RMS
- Remote callsign:** KD7ZEV-10
- Channel priority:** 3
- TNC Port:** 1
- Channel enabled:**
- Activity timeout:** 10 minutes
- TNC Type:** KPC3+
- Serial port:** COM1
- Baud Rate:** 9600
- Do a full TNC configuration only on first use:**
- TNC Configuration File:** C:\Paclink\Data\ExampleKPC3+.aps
- Optional connect script:** (Empty text area)
- Script inactivity timeout:** 60 seconds
- Optional VHF/UHF Radio Control:**
 - Manual (none)
 - Via PTC II, Ilpro, Ilusb
 - PTC Levels to Radio:
 - TTL
 - RS-232
 - Direct via Serial Port:
- Radio Model:** (Dropdown menu)
- Radio Address (hex):** 01
- Baud Rate:** (Dropdown menu)
- Serial Port:** (Dropdown menu)
- Channel frequency in MHz:** (Text field)

Buttons at the bottom: Add New Channel, Remove This Channel, Update The Channel, Close, Help.

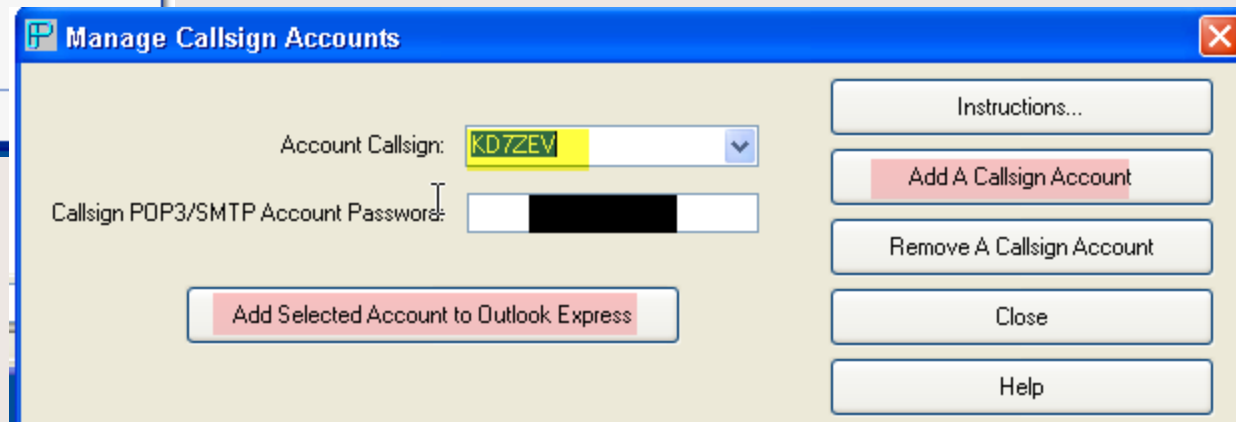
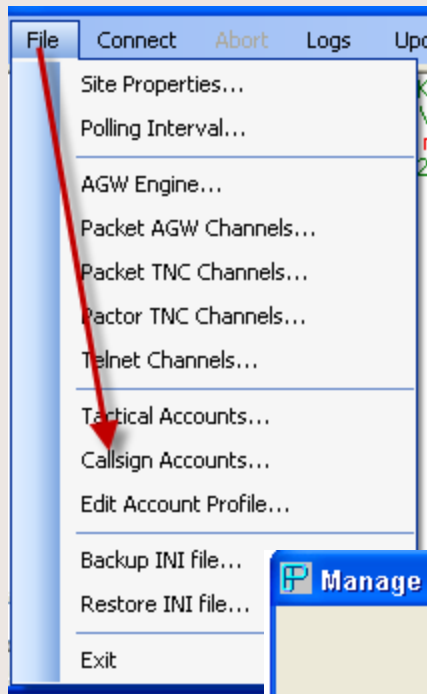
WINLINK™ - PACLINK MAIL SERVER

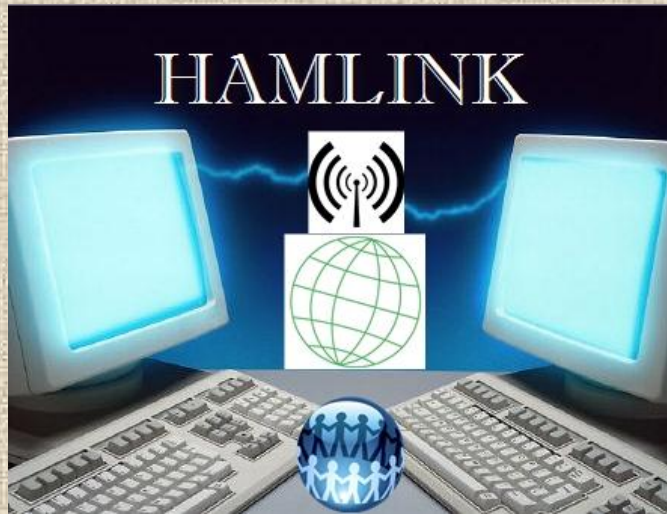


WINLINK™ - PACLINK MAIL SERVER



WINLINK™ - PACLINK MAIL SERVER





QUESTIONS?

Reference:

<http://www.winlink.org/ClientSoftware>

